

MATCH LINE STA. CDS-1399+75

CROSS REFERENCES			
SHEET NO.	DESCRIPTION	CURVE INFO.	
4	C10, C19		
132	ROADWAY PROFILE		
67	UNDERDRAIN DATA AND QUANTITIES		
362	LIGHTING PLAN		
STATION TO STATION		SIDE	
* STATIONING REFERS TO RAMP B ALIGNMENT			
B1	1395+75 ~ 1399+75	L.T.	380
F1	* 78+40 ~ 82+21	R.T.	353
R1	1395+75 ~ 1399+75	R.T.	400
D1	1396+00	L-R	78
G1	1397+80.56 ~ 1399+73.73	L.T.	175
SHEET TOTALS			1
STATION TO STATION		SIDE	
* STATIONING REFERS TO RAMP B ALIGNMENT			
D2	1395+00	R.T.	1
D3	1395+83 ~ 1396+00	L.T.	24
D4	* 78+63	L-R	99
EC1	* 78+40 ~ 78+63	L.T.	18
SHEET TOTALS			164
STATION TO STATION		SIDE	
* STATIONING REFERS TO RAMP B ALIGNMENT			
D2	1395+00	R.T.	1
D3	1395+83 ~ 1396+00	L.T.	24
D4	* 78+63	L-R	99
EC1	* 78+40 ~ 78+63	L.T.	18
SHEET TOTALS			164

FRA-270-32.46

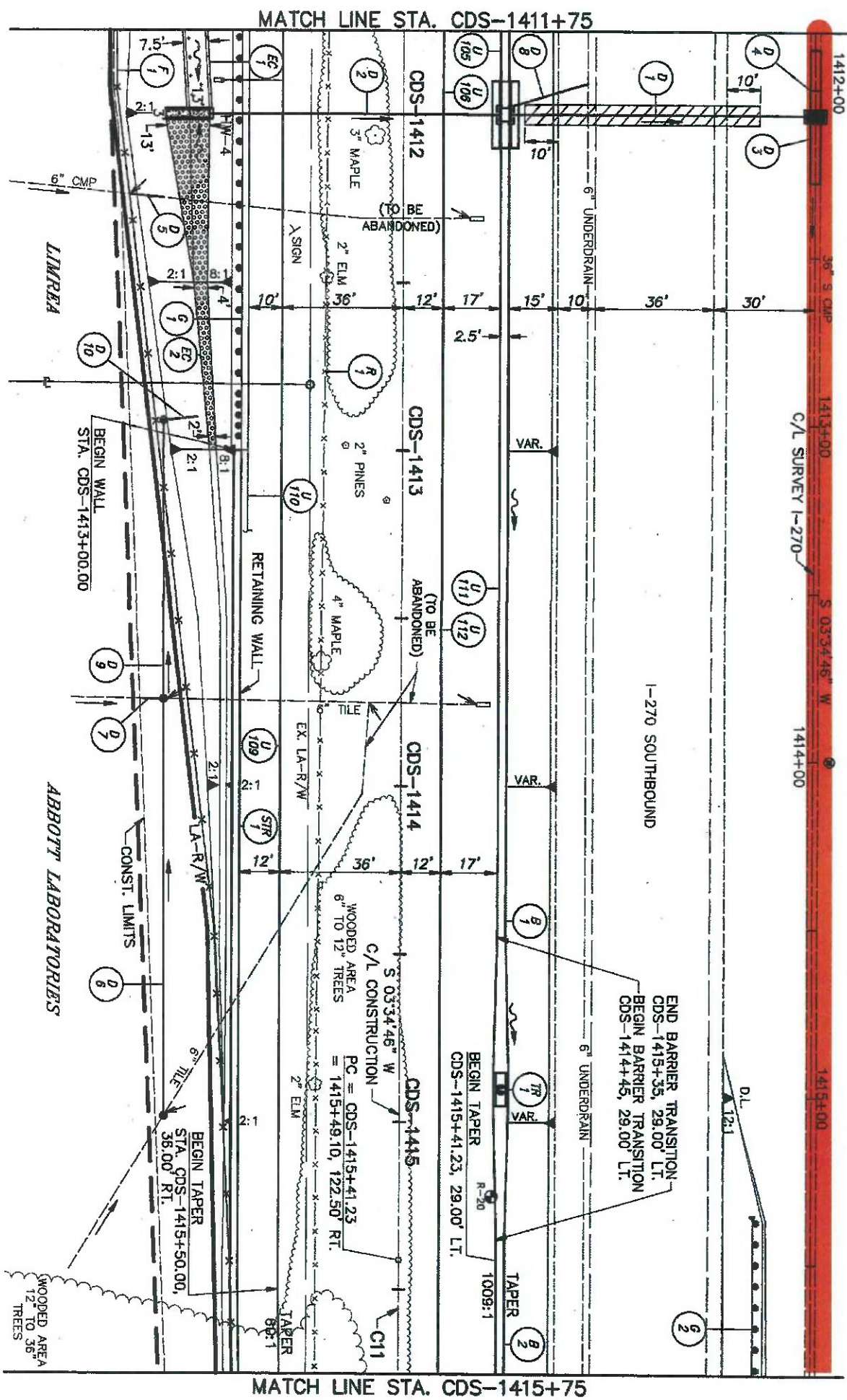
PLAN
CDS-1395+75 TO STA. CDS-1399+75

CALC BY: GJW
DATE: 2/2/94
CHKD BY: MFE
DATE: 12/5/94

20
10
HORIZONTAL
SCALE IN FEET



131
593



850	845	840	835	830	825
837.64					841.0 837.51
					+29.52, 6" TILE INV. 838.54
837.53					841.0 837.38
837.42					840.7 837.25
					EX. GRND. EX. EOP
837.31					840.1 837.13
					+75.07, 6" TILE INV. 837.57
837.20					840.1 837.00
837.09					840.5 836.89
836.98					840.3 836.77
836.87					840.1 836.63
850	845	840	835	830	825

CROSS REFERENCES									
SHEET NO.	DESCRIPTION	SHEET NO.	DESCRIPTION						
4	C11 CURVE INFO.	362	⊙ LIGHTING PLAN						
67	U UNDERDRAIN DATA AND QUANTITIES	315	DRAINAGE PROFILE						
524	SR RETAINING WALL								
342	TP TRAFFIC CONTROL PLAN								

REFERENCE No.										
STATION TO STATION				SIDE						
ALL STATIONING REFERS TO CDS ALIGNMENT				CONCRETE BARRIER, TYPE B	FENCE, TYPE CL	FENCE, TYPE CL AS PER PLAN	GUARDRAIL, TYPE 5	BRIDGE TERMINAL ASSEMBLY, TYPE 1	FENCE REMOVED	ANCHOR ASSEMBLY, TYPE E
B1	1411+75 ~ 1414+85	L.T.	280	L.F.	L.F.	L.F.	L.F.	E.A.	L.F.	E.A.
B2	1414+95 ~ 1415+75		80							
G1	1411+70.85 ~ 1413+00	R.T.					112.5	1		
G2	1415+29.62 ~ 1415+79.80	L.T.					25			1
F1	1411+75 ~ 1415+75	R.T.		377	26					
R1	1411+75 ~ 1415+75	R.T.						400		
SHEET TOTALS			370	377	26	137.5	1	400	1	

REFERENCE No.									
STATION TO STATION				SIDE					
ALL STATIONING REFERS TO CDS ALIGNMENT				INLET, NO. 3D	CONDUIT, BORED OR JACKED, 21", TYPE B	18" CONDUIT, TYPE B	21" CONDUIT, TYPE B	CONCRETE MASONRY	RIPRAP USING 6" REIN. CONCRETE SLAB
D1	1412+00	L.T.	1	E.A.	L.F.	L.F.	L.F.	C.Y.	C.Y.
D2	1412+00	L-R				88	22	0.44	2.17
SHEET TOTALS			1	70	88	22	0.44	2.17	

REFERENCE No.										
STATION TO STATION				SIDE						
ALL STATIONING REFERS TO CDS ALIGNMENT				CATCH BASIN, NO. 4A AS PER PLAN	8" CONDUIT, TYPE F	36" CONDUIT, TYPE C 707.13	DITCH EROSION PROTECTION	ROCK CHANNEL PROTECTION, TYPE C WITH FILTER, T = 18"	INSPECTION WELL	6" CONDUIT, TYPE B, 707.17
D3	1412+00 ~ 1412+10	L.T.	1	E.A.	L.F.	L.F.	S.Y.	C.Y.	E.A.	L.F.
D4	1413+90 ~ 1412+00	L.T.				20				
D5	1412+25	R.T.			10					
D6	1413+74 ~ 1415+00	R.T.			124				1	
D7	1413+74	R.T.			6					
D8	1411+90 ~ 1412+00	L.T.								26
D9	1412+91 ~ 1413+74	R.T.	83						1	
D10	1412+90 ~ 1412+91	R.T.	10							
EC1	1411+75 ~ 1412+00	R.T.			21					
EC2	1412+00 ~ 1413+00	R.T.			31					
SHEET TOTALS			1	233	40	21	31	3	26	

138

593

FRA-270-32.46

PLAN & PROFILE

STA CDS-1411+75 TO STA. CDS-1415+75

DATE: G.J.W.
DATE: 2/2/84
BY: M.F.U.
DATE: 12/5/84

0

20

40

10

HORIZONTAL SCALE IN FEET

0

10

20

30

40

50

60

70

80

90

100

110

120

130

140

150

160

170

180

190

200

210

220

230

240

250

260

270

280

290

300

310

320

330

340

350

360

370

380

390

400

410

420

430

440

450

460

470

480

490

500

510

520

530

540

550

560

570

580

590

600

610

620

630

640

650

660

670

680

690

700

710

720

730

740

750

760

770

780

790

800

810

820

830

840

850

860

870

880

890

900

910

920

930

940

950

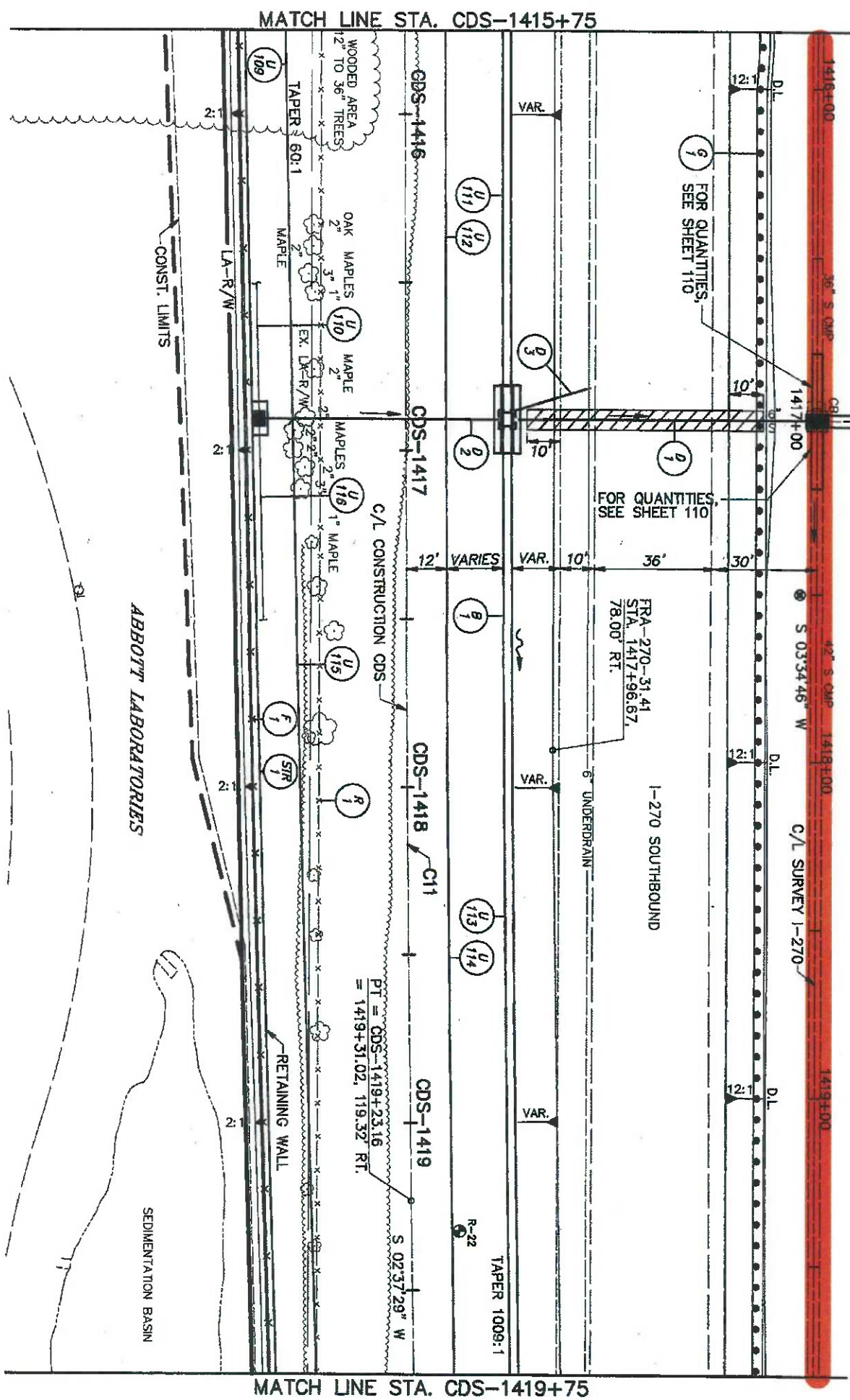
960

970

980

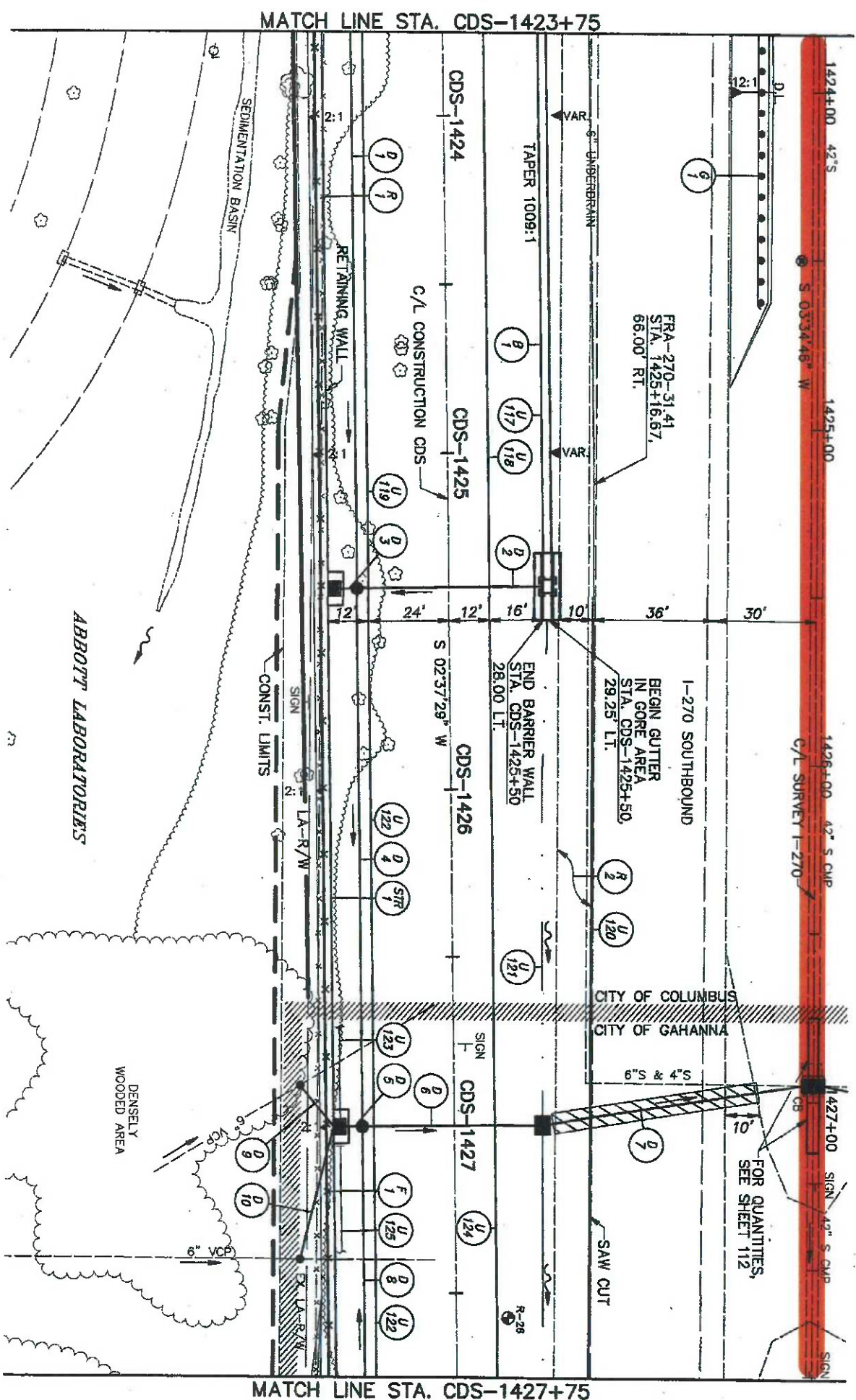
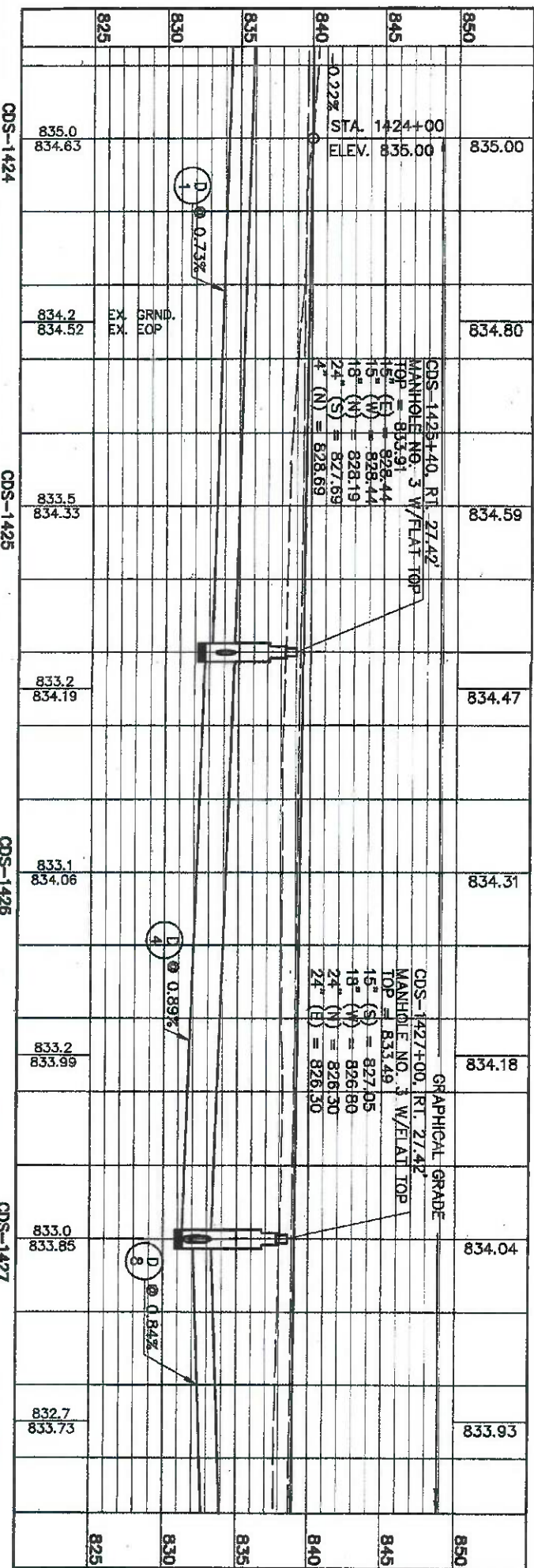
990

1000



850	845	840	835	830	825
					840.0 836.50
					840.1 836.40
					840.8 836.29
					EX. GRND. EX. BOP
					840.2 836.19
					840.2 836.08
					840.0 835.95
					839.2 835.82
					838.5 835.68

CROSS REFERENCES									
SHEET NO.	DESCRIPTION								
4	C11	CURVE INFO.							
67	1	UNDERDRAIN DATA AND QUANTITIES							
524	1	RETAINING WALL							
362	LIGHTING PLAN								
REFERENCE No.			622	607	202	606			
STATION TO STATION									
ALL STATIONING REFERS TO CDS ALIGNMENT									
B1	1415+75 ~ 1419+75	LT.	380						
F1	1415+75 ~ 1419+75	RT.		400					
R1	1415+75 ~ 1419+75	RT.			400				
G1	1415+79.80 ~ 1419+81.32	LT.				400			
SIDE									
CONCRETE BARRIER, TYPE B			L.F.	L.F.	L.F.	L.F.			
FENCE, TYPE CL AS PER PLAN			L.F.						
FENCE REMOVED			L.F.						
GUARDRAIL, TYPE 5			L.F.						
STATION TO STATION									
ALL STATIONING REFERS TO CDS ALIGNMENT									
D1	1416+90.50	LT.	1						
D2	1416+90.50	L-R		1	75				
D3	1416+80 ~ 1416+90	LT.					26		
SIDE									
INLET, NO. 3D			EA.						
INLET, NO. 3E			EA.						
15" CONDUIT, TYPE B			L.F.						
18" CONDUIT, TYPE B			L.F.	22					
6" CONDUIT, TYPE B 707.17			L.F.						
CONDUIT, BORED OR JACKED, 18", TYPE B			L.F.		70				
STATION TO STATION									
ALL STATIONING REFERS TO CDS ALIGNMENT									
REFERENCE No.			604	604	603	603	603	603	
STATION TO STATION									
ALL STATIONING REFERS TO CDS ALIGNMENT									
SIDE									
INLET, NO. 3D			EA.						
INLET, NO. 3E			EA.						
15" CONDUIT, TYPE B			L.F.						
18" CONDUIT, TYPE B			L.F.	22					
6" CONDUIT, TYPE B 707.17			L.F.						
CONDUIT, BORED OR JACKED, 18", TYPE B			L.F.		70				
STATION TO STATION									
ALL STATIONING REFERS TO CDS ALIGNMENT									
REFERENCE No.			604	604	603	603	603	603	
STATION TO STATION									
ALL STATIONING REFERS TO CDS ALIGNMENT									
SIDE									
INLET, NO. 3D			EA.						
INLET, NO. 3E			EA.						
15" CONDUIT, TYPE B			L.F.						
18" CONDUIT, TYPE B			L.F.	22					
6" CONDUIT, TYPE B 707.17			L.F.						
CONDUIT, BORED OR JACKED, 18", TYPE B			L.F.		70				
STATION TO STATION									
ALL STATIONING REFERS TO CDS ALIGNMENT									
REFERENCE No.			604	604	603	603	603	603	
STATION TO STATION									
ALL STATIONING REFERS TO CDS ALIGNMENT									
SIDE									
INLET, NO. 3D			EA.						
INLET, NO. 3E			EA.						
15" CONDUIT, TYPE B			L.F.						
18" CONDUIT, TYPE B			L.F.	22					
6" CONDUIT, TYPE B 707.17			L.F.						
CONDUIT, BORED OR JACKED, 18", TYPE B			L.F.		70				
STATION TO STATION									
ALL STATIONING REFERS TO CDS ALIGNMENT									
REFERENCE No.			604	604	603	603	603	603	
STATION TO STATION									
ALL STATIONING REFERS TO CDS ALIGNMENT									
SIDE									
INLET, NO. 3D			EA.						
INLET, NO. 3E			EA.						
15" CONDUIT, TYPE B			L.F.						
18" CONDUIT, TYPE B			L.F.	22					
6" CONDUIT, TYPE B 707.17			L.F.						
CONDUIT, BORED OR JACKED, 18", TYPE B			L.F.		70				
STATION TO STATION									
ALL STATIONING REFERS TO CDS ALIGNMENT									
REFERENCE No.			604	604	603	603	603	603	
STATION TO STATION									
ALL STATIONING REFERS TO CDS ALIGNMENT									
SIDE									
INLET, NO. 3D			EA.						
INLET, NO. 3E			EA.						
15" CONDUIT, TYPE B			L.F.						
18" CONDUIT, TYPE B			L.F.	22					
6" CONDUIT, TYPE B 707.17			L.F.						
CONDUIT, BORED OR JACKED, 18", TYPE B			L.F.		70				
STATION TO STATION									
ALL STATIONING REFERS TO CDS ALIGNMENT									
REFERENCE No.			604	604	603	603	603	603	
STATION TO STATION									
ALL STATIONING REFERS TO CDS ALIGNMENT									
SIDE									
INLET, NO. 3D			EA.						
INLET, NO. 3E			EA.						
15" CONDUIT, TYPE B			L.F.						
18" CONDUIT, TYPE B			L.F.	22					
6" CONDUIT, TYPE B 707.17			L.F.						
CONDUIT, BORED OR JACKED, 18", TYPE B			L.F.		70				
STATION TO STATION									
ALL STATIONING REFERS TO CDS ALIGNMENT									
REFERENCE No.			604	604	603	603	603	603	
STATION TO STATION									
ALL STATIONING REFERS TO CDS ALIGNMENT									
SIDE									
INLET, NO. 3D			EA.						
INLET, NO. 3E			EA.						
15" CONDUIT, TYPE B			L.F.						
18" CONDUIT, TYPE B			L.F.	22					
6" CONDUIT, TYPE B 707.17			L.F.						
CONDUIT, BORED OR JACKED, 18", TYPE B			L.F.		70				
STATION TO STATION									
ALL STATIONING REFERS TO CDS ALIGNMENT									
REFERENCE No.			604	604	603	603	603	603	
STATION TO STATION									
ALL STATIONING REFERS TO CDS ALIGNMENT									
SIDE									
INLET, NO. 3D			EA.						
INLET, NO. 3E			EA.						
15" CONDUIT, TYPE B			L.F.						
18" CONDUIT, TYPE B			L.F.	22					
6" CONDUIT, TYPE B 707.17			L.F.						
CONDUIT, BORED OR JACKED, 18", TYPE B			L.F.		70				
STATION TO STATION									
ALL STATIONING REFERS TO CDS ALIGNMENT									
REFERENCE No.			604	604	603	603	603	603	
STATION TO STATION									
ALL STATIONING REFERS TO CDS ALIGNMENT									
SIDE									
INLET, NO. 3D			EA.						
INLET, NO. 3E			EA.						
15" CONDUIT, TYPE B			L.F.						
18" CONDUIT, TYPE B			L.F.	22					
6" CONDUIT, TYPE B 707.17			L.F.						
CONDUIT, BORED OR JACKED, 18", TYPE B			L.F.		70				
STATION TO STATION									
ALL STATIONING REFERS TO CDS ALIGNMENT									
REFERENCE No.			604	604	603	603	603	603	
STATION TO STATION									
ALL STATIONING REFERS TO CDS ALIGNMENT									
SIDE									
INLET, NO. 3D			EA.						
INLET, NO. 3E			EA.						
15" CONDUIT, TYPE B			L.F.						
18" CONDUIT, TYPE B			L.F.	22					
6" CONDUIT, TYPE B 707.17			L.F.						
CONDUIT, BORED OR JACKED, 18", TYPE B			L.F.		70				
STATION TO STATION									
ALL STATIONING REFERS TO CDS ALIGNMENT									
REFERENCE No.			604	604	603	603	603	603	
STATION TO STATION									
ALL STATIONING REFERS TO CDS ALIGNMENT									
SIDE									
INLET, NO. 3D			EA.						
INLET, NO. 3E			EA.						
15" CONDUIT, TYPE B			L.F.						
18" CONDUIT, TYPE B			L.F.	22					
6" CONDUIT, TYPE B 707.17			L.F.						
CONDUIT, BORED OR JACKED, 18", TYPE B			L.F.		70				
STATION TO STATION									
ALL STATIONING REFERS TO CDS ALIGNMENT									
REFERENCE No.			604	604	603	603	603	603	
STATION TO STATION									
ALL STATIONING REFERS TO CDS ALIGNMENT									
SIDE									
INLET, NO. 3D			EA.						
INLET, NO. 3E			EA.						
15" CONDUIT, TYPE B			L.F.						
18" CONDUIT, TYPE B			L.F.	22					
6" CONDUIT, TYPE B 707.17			L.F.						
CONDUIT, BORED OR JACKED, 18", TYPE B			L.F.		70				
STATION TO STATION									
ALL STATIONING REFERS TO CDS ALIGNMENT									
REFERENCE No.			604	604	603	603	603	603	
STATION TO STATION									
ALL STATIONING REFERS TO CDS ALIGNMENT									
SIDE									
INLET, NO. 3D			EA.						
INLET, NO. 3E			EA.						
15" CONDUIT, TYPE B			L.F.						
18" CONDUIT, TYPE B			L.F.	22					
6" CONDUIT, TYPE B 707.17			L.F.						
CONDUIT, BORED OR JACKED, 18", TYPE B			L.F.		70				
STATION TO STATION									
ALL STATIONING REFERS TO CDS ALIGNMENT									
REFERENCE No.			604	604	603	603	603	603	
STATION TO STATION									
ALL STATIONING REFERS TO CDS ALIGNMENT									
SIDE									
INLET, NO. 3D			EA.						
INLET, NO. 3E			EA.						
15" CONDUIT, TYPE B			L.F.						
18" CONDUIT, TYPE B			L.F.	22					
6" CONDUIT, TYPE B 707.17			L.F.						
CONDUIT, BORED OR JACKED, 18", TYPE B			L.F.		70				
STATION TO STATION									
ALL STATIONING REFERS TO CDS ALIGNMENT									
REFERENCE No.			604	604	603	603	603	603	
STATION TO STATION									
ALL STATIONING REFERS TO CDS ALIGNMENT									
SIDE									
INLET, NO. 3D			EA.						
INLET, NO. 3E			EA.						
15" CONDUIT, TYPE B			L.F.						
18" CONDUIT, TYPE B			L.F.	22					
6" CONDUIT, TYPE B 707.17			L.F.						
CONDUIT, BORED OR JACKED, 18", TYPE B			L.F.		70				
STATION TO STATION									
ALL STATIONING REFERS TO CDS ALIGNMENT									
REFERENCE No.			604	604	603	603	603	603	
STATION TO STATION									
ALL STATIONING REFERS TO CDS ALIGNMENT									
SIDE									
INLET, NO. 3D			EA.						
INLET, NO. 3E			EA.						
15" CONDUIT, TYPE B			L.F.						
18" CONDUIT, TYPE B			L.F.	22					
6" CONDUIT, TYPE B 707.17			L.F.						
CONDUIT, BORED OR JACKED, 18", TYPE B			L.F.		70				
STATION TO STATION									
ALL STATIONING REFERS TO CDS ALIGNMENT									
REFERENCE No.			604	604	603	603	603	603	
STATION TO STATION									
ALL STATIONING REFERS TO CDS ALIGNMENT									
SIDE									
INLET, NO. 3D			EA.						
INLET, NO. 3E			EA.						
15" CONDUIT, TYPE B			L.F.						
18" CONDUIT, TYPE B			L.F.	22					
6" CONDUIT, TYPE B 707.17			L.F.						
CONDUIT, BORED OR JACKED, 18", TYPE B			L.F.		70				
STATION TO STATION									
ALL STATIONING REFERS TO CDS ALIGNMENT									
REFERENCE No.			604	604	603	603	603	603	
STATION TO STATION									
ALL STATIONING REFERS TO CDS ALIGNMENT									
SIDE									
INLET, NO. 3D			EA.						
INLET, NO. 3E			EA.						
15" CONDUIT, TYPE B			L.F.						
18" CONDUIT, TYPE B			L.F.	22					
6" CONDUIT, TYPE B 707.17			L.F.						
CONDUIT, BORED OR JACKED, 18", TYPE B			L.F.		70				
STATION TO STATION									
ALL STATIONING REFERS TO CDS ALIGNMENT									
REFERENCE No.			604	604	603	603	603	603	
STATION TO STATION									
ALL STATIONING REFERS TO CDS ALIGNMENT									
SIDE									
INLET, NO. 3D			EA.						
INLET, NO. 3E			EA.						
15" CONDUIT, TYPE B			L.F.						
18" CONDUIT, TYPE B			L.F.	22					
6" CONDUIT, TYPE B 707.17			L.F.						
CONDUIT, BORED OR JACKED, 18", TYPE B			L.F.		70				
STATION TO STATION									
ALL STATIONING REFERS TO CDS ALIGNMENT									
REFERENCE No.			604	604	603	603	603	603	
STATION TO STATION									
ALL STATIONING REFERS TO CDS ALIGNMENT									
SIDE									
INLET, NO. 3D			EA.						
INLET, NO. 3E			EA.						
15" CONDUIT, TYPE B			L.F.						
18" CONDUIT, TYPE B			L.F.	22					
6" CONDUIT, TYPE B 707.17			L.F.						
CONDUIT, BORED OR JACKED, 18", TYPE B			L.F.		70				
STATION TO STATION									
ALL STATIONING REFERS TO CDS ALIGNMENT									
REFERENCE No.			604	604	603	603	603	603	
STATION TO STATION									
ALL STATIONING REFERS TO CDS ALIGNMENT									
SIDE									
INLET, NO. 3D			EA.						
INLET, NO. 3E			EA.						
15" CONDUIT, TYPE B			L.F.						
18" CONDUIT, TYPE B			L.F.	22					
6" CONDUIT, TYPE B 707.17			L.F.						
CONDUIT, BORED OR JACKED, 18", TYPE B			L.F.		70				
STATION TO STATION									
ALL STATIONING REFERS TO CDS ALIGNMENT									
REFERENCE No.			604	604	603	603	603	603	
STATION TO STATION									
ALL STATIONING REFERS TO CDS ALIGNMENT									



REFERENCE No.		STATION TO STATION		SIDE	
D9	1426+86 ~ 1427+00	RT.	16	L.F.	EA.
D10	1427+00 ~ 1427+40	RT.	42	L.F.	EA.
SHEET TOTALS			58	2	

REFERENCE No.		STATION TO STATION		SIDE	
D2	1425+40	L-R	1	EA.	EA.
D3	1425+40	RT.	1	EA.	EA.
D4	1425+40 ~ 1427+00	RT.	8	L.F.	L.F.
D5	1427+00	RT.	1	EA.	EA.
D6	1427+00	L-R	1	EA.	EA.
D7	1426+87 ~ 1427+00	L.T.	1	EA.	EA.
D8	1427+00 ~ 1427+75	RT.	75	L.F.	L.F.
SHEET TOTALS			1	2	2

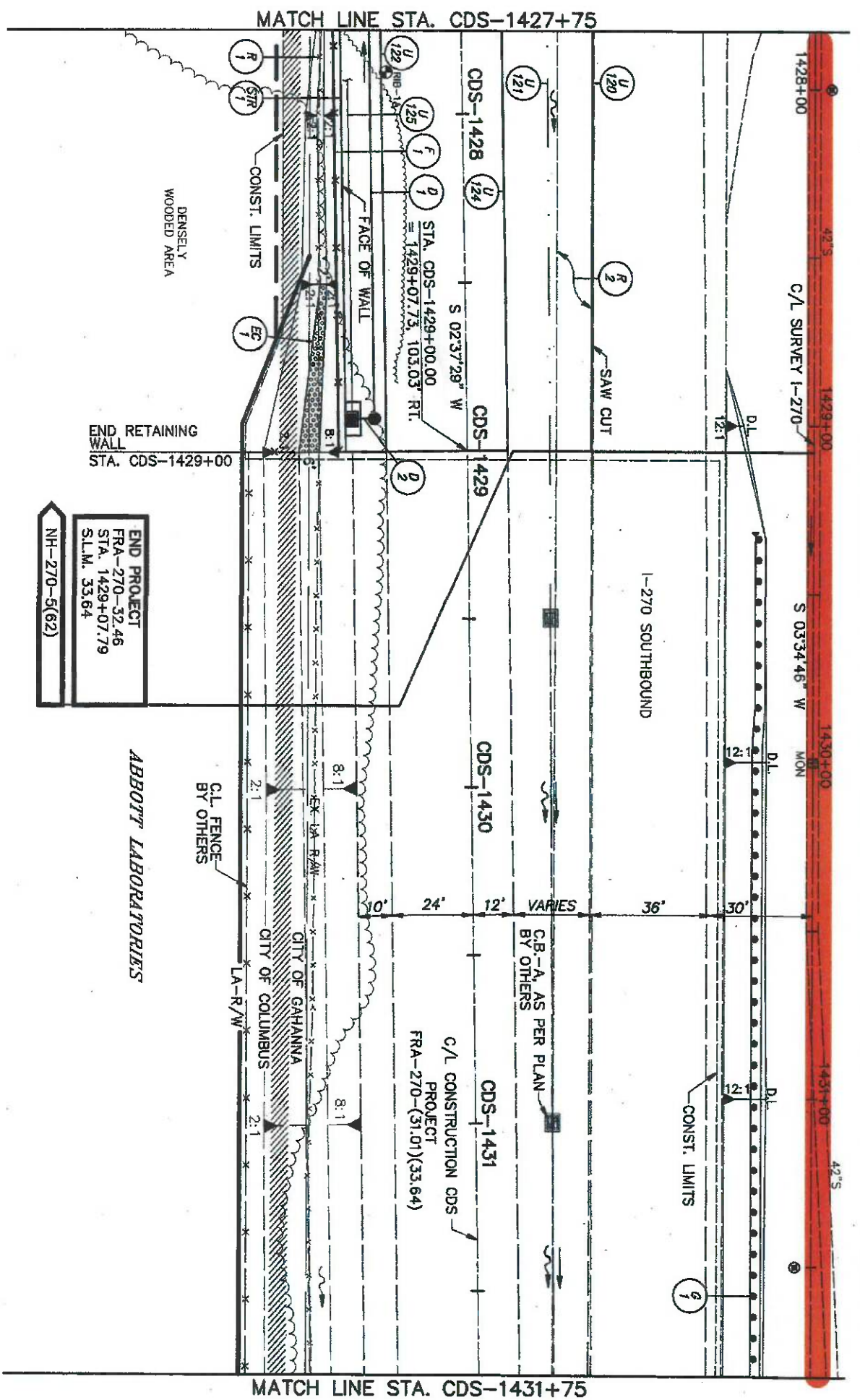
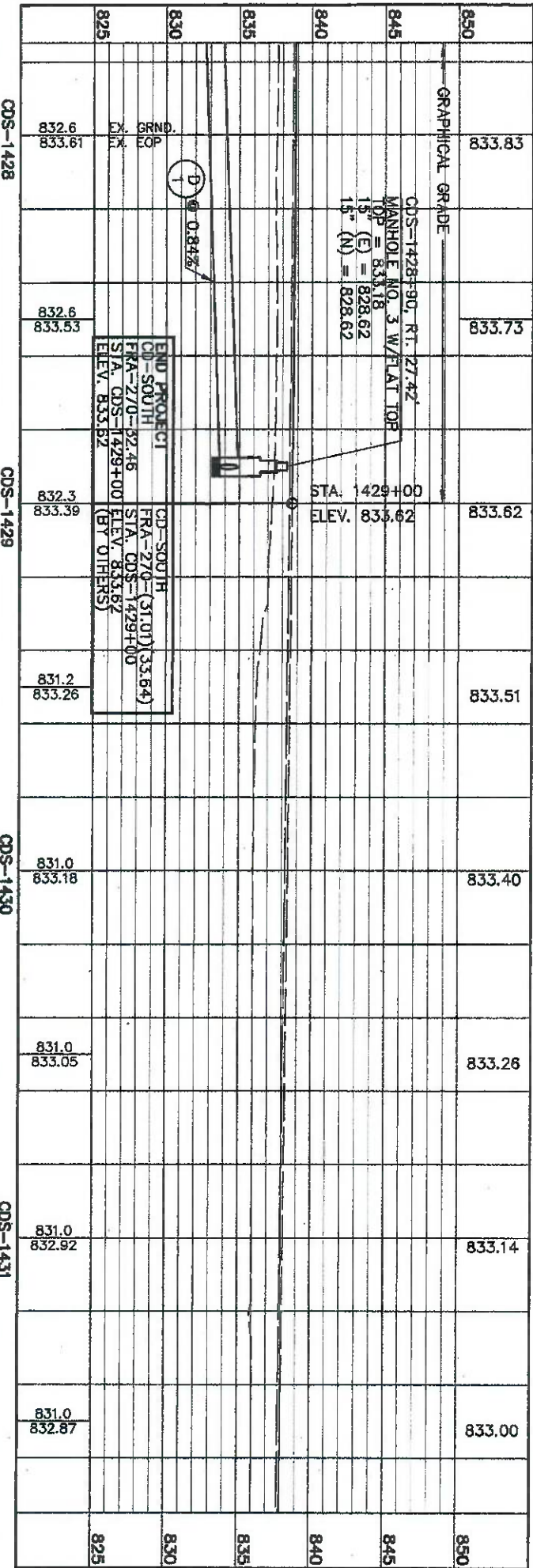
REFERENCE No.		STATION TO STATION		SIDE	
B1	1423+75 ~ 1425+50	L.T.	155	L.F.	L.F.
F1	1423+75 ~ 1427+75	RT.	400	L.F.	L.F.
R1	1423+75 ~ 1427+75	RT.	400	L.F.	L.F.
R2	1425+50 ~ 1427+75	RT.	400	L.F.	L.F.
G1	1423+81.27 ~ 1424+50.28	L.T.	62.5	L.F.	L.F.
D1	1423+75 ~ 1425+40	RT.	165	L.F.	L.F.
SHEET TOTALS			155	400	400

REFERENCE No.		STATION TO STATION		SIDE	
B2	1423+75 ~ 1425+50	L.T.	155	L.F.	L.F.
F2	1423+75 ~ 1427+75	RT.	400	L.F.	L.F.
R2	1425+50 ~ 1427+75	RT.	400	L.F.	L.F.
G2	1423+81.27 ~ 1424+50.28	L.T.	62.5	L.F.	L.F.
D2	1423+75 ~ 1425+40	RT.	165	L.F.	L.F.
SHEET TOTALS			155	400	400

FRA-270-32.46

PLAN & PROFILE
STA CDS-1423+75 TO STA. CDS-1427+75





CROSS REFERENCES			
SHEET NO.	DESCRIPTION	STATION	REFERENCE No.
67	UNDERDRAIN DATA AND QUANTITIES	1427+75 ~ 1429+00	RT.
524	RETAINING WALL	1427+75 ~ 1429+00	RT.
362	LIGHTING PLAN	1427+75 ~ 1429+00	RT.
607	FENCE, TYPE C1	1427+75 ~ 1429+00	RT.
607	FENCE, TYPE C1 AS PER PLAN	1427+75 ~ 1429+00	RT.
604	INLET, NO. 3E	1427+75 ~ 1429+00	RT.
604	MANHOLE, NO. 3 WITH FLAT TOP	1427+75 ~ 1429+00	RT.
603	15" CONDUIT, TYPE B	1427+75 ~ 1429+00	RT.
202	FENCE REMOVED	1427+75 ~ 1429+00	RT.
601	ROCK CHANNEL PROTECTION, TYPE C WITH FILTER, T = 18"	1427+75 ~ 1429+00	RT.
606	GUARDRAIL, TYPE 5	1427+75 ~ 1429+00	RT.
606	ANCHOR ASSEMBLY, TYPE E	1427+75 ~ 1429+00	RT.
202	PAVEMENT REMOVED	1427+75 ~ 1429+00	RT.
27	TOTALS	1427+75 ~ 1429+00	RT.

CROSS REFERENCES			
SHEET NO.	DESCRIPTION	STATION	REFERENCE No.
67	UNDERDRAIN DATA AND QUANTITIES	1427+75 ~ 1429+00	RT.
524	RETAINING WALL	1427+75 ~ 1429+00	RT.
362	LIGHTING PLAN	1427+75 ~ 1429+00	RT.
607	FENCE, TYPE C1	1427+75 ~ 1429+00	RT.
607	FENCE, TYPE C1 AS PER PLAN	1427+75 ~ 1429+00	RT.
604	INLET, NO. 3E	1427+75 ~ 1429+00	RT.
604	MANHOLE, NO. 3 WITH FLAT TOP	1427+75 ~ 1429+00	RT.
603	15" CONDUIT, TYPE B	1427+75 ~ 1429+00	RT.
202	FENCE REMOVED	1427+75 ~ 1429+00	RT.
601	ROCK CHANNEL PROTECTION, TYPE C WITH FILTER, T = 18"	1427+75 ~ 1429+00	RT.
606	GUARDRAIL, TYPE 5	1427+75 ~ 1429+00	RT.
606	ANCHOR ASSEMBLY, TYPE E	1427+75 ~ 1429+00	RT.
202	PAVEMENT REMOVED	1427+75 ~ 1429+00	RT.
27	TOTALS	1427+75 ~ 1429+00	RT.

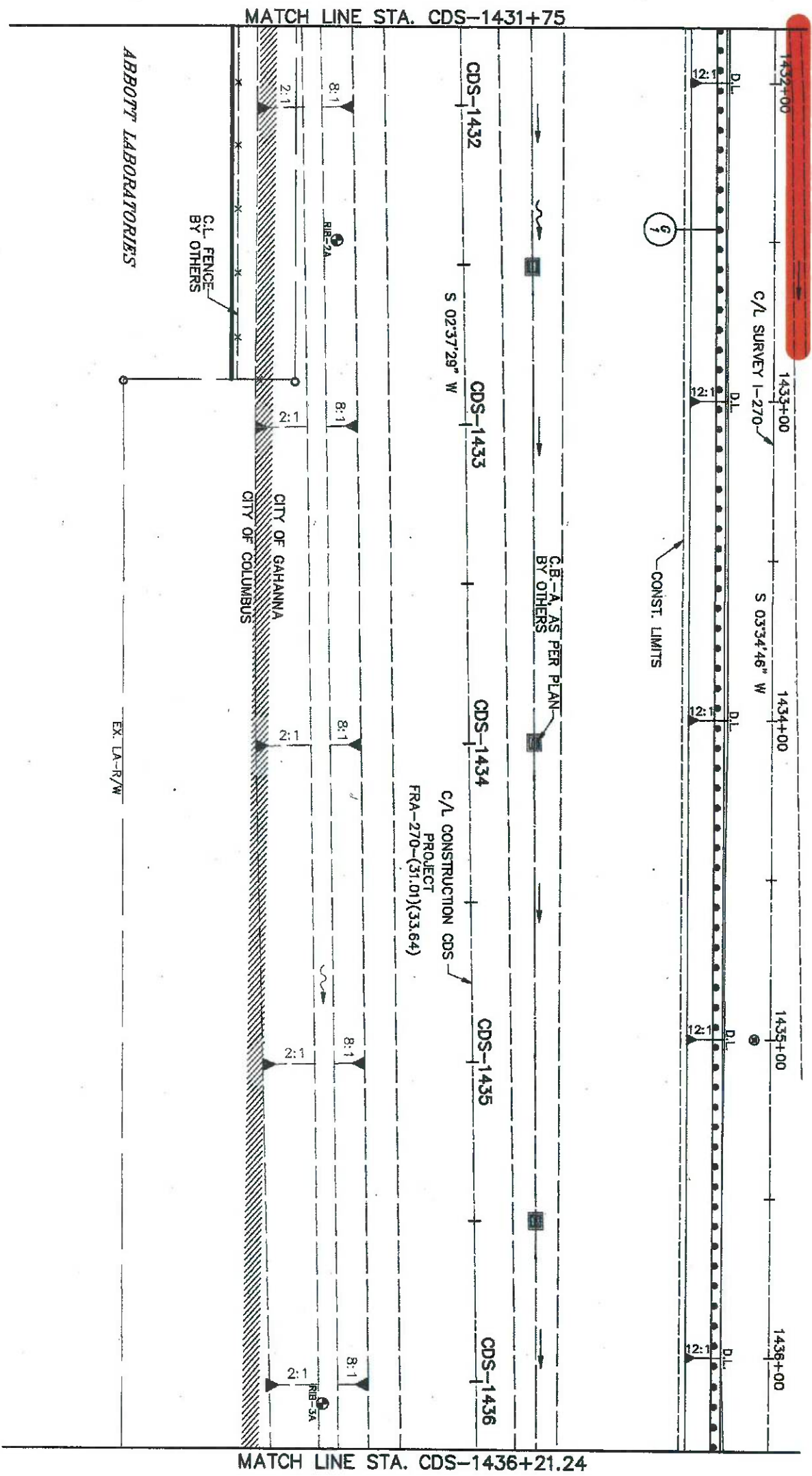
FRA-270-32.46

PLAN & PROFILE
STA CDS-1427+75 TO STA. CDS-1429+00

CALC. BY: GJW
DATE: 2/2/94
CHKD. BY: MFCJ
DATE: 12/5/94

0 20 40
10
HORIZONTAL
SCALE IN FEET





CROSS REFERENCES		REFERENCE No.	
SHEET NO.	DESCRIPTION	STATION TO STATION	SIDE
362	● LIGHTING PLAN	ALL STATIONING REFERS TO CDS ALIGNMENT	L.F.
		G1 1431+77.32 ~ 1436+21.25	L.T. 450
SHEET TOTALS		450	



PLAN
STA. CDS-1431+75 TO STA. CDS-1436+21.24

FRA-270-32.46

143
593

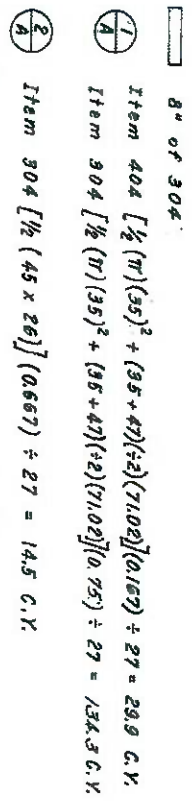
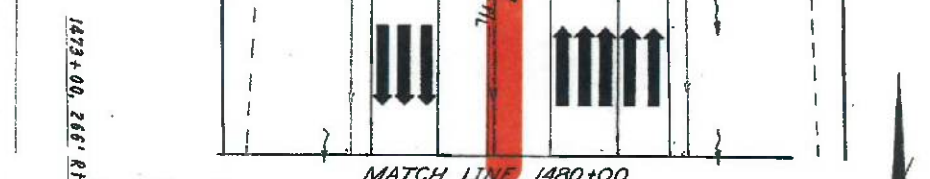


2	OHIO
---	------

* With 23 Grotes

107445	102	200	2	1	2	3705
--------	-----	-----	---	---	---	------

ST 1505 70 172/440-00



CALC: SAS 1-70
ONE W.O.L. 2-70

[illegible]

STATION TO STATION	SIDE	404		403		405		Bonds of Bonds of Ditto
		Agre- gates Bonds	Asphalt Concrete Type	6" Type	6" Type	6" Type	6" Type	
0-00 to 412-71	LT							
0-00 to 412-75	LT							
2379 to 480-00	LT							
2379 to 480-00	RT							
31-28	RT							
2-85	RT							
TOTALS		150	30	76	10	2000		



FRA-62-20.83

CHK: W.D.R. 2-70

1. For Ramp "D" Plan See Sheet No. 90-91.

4. For Ramp "B" & I.R. 270 Pavement Details, See Sheet No. _____

* Quantities Carried on Next Sheet.

RURAL TOTALS	124	1000	1	1	34	125
--------------	-----	------	---	---	----	-----

RURAL TOTALS	10	1804	
--------------	----	------	--

FRANKLIN COUNTY
FRA-270-25.39N
FRA-22-20.63

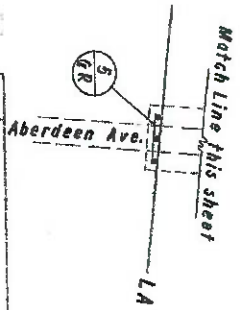
CALC: S.A.S. L-70
CHK: JUD.B. P-70

CALCULATIONS

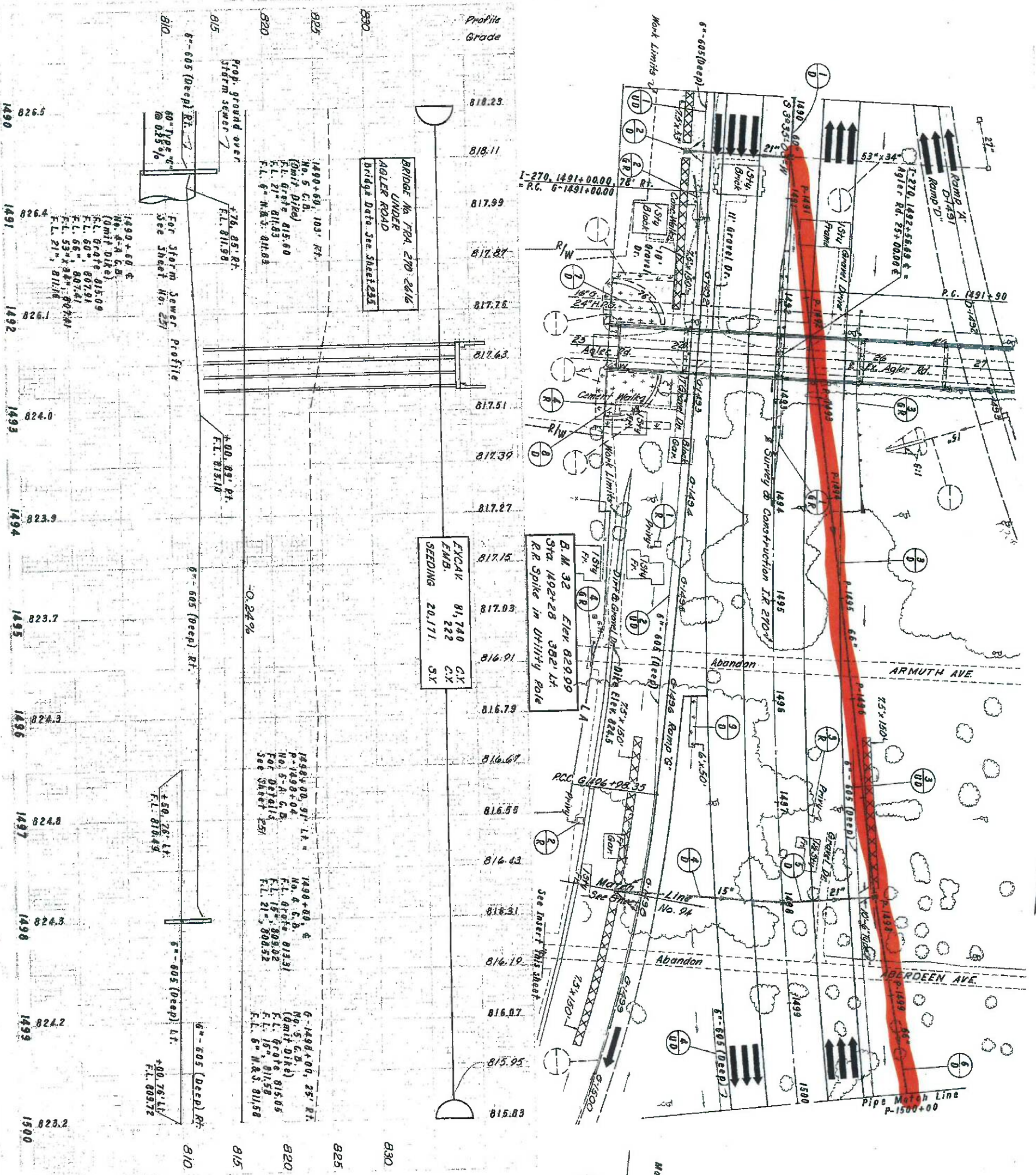
(120 x 25) + (10 x 4) = 30 S.F.
[(76 ÷ 2) (45 + 55) ÷ 2] x 1.04 ÷ 9 = 220.0 S.Y.
[(84 ÷ 2) (50 + 54) ÷ 2] x 1.04 ÷ 9 = 252.4 S.Y.

NOTES:

1. For Ramp "D" Plan, See Sheet No. 90-91
2. For Ramp "D" Profile, See Sheet No. 98
3. For Ramp "G" Plan, See Sheet No. 94
4. For Ramp "G" Profile, See Sheet No. 101
5. For Ramp "G" & I.R. 270 Turnout Details, See Sheet No. 151
6. For Agler Road Plan & Profile, See Sheet No. 234, 235 & 2
7. For Storm Sewer Profile, See Sheet No. 251-252
8. For Interchange Geometrics See Sheet 82, 83 & 84



REF. STATION TO STATION	SIDE	603		604		605										
		Type B	Type C	Type A	Type B	Type C	Type A									
1-0 1430+00 to 1430+60																
2-0 1430+60	Rt.	102														
3-0 P-1430+60 to P-1438+04	Lt.	744														
4-0 1438+00	Rt.	164														
5-0 1438+00	Lt.	30														
6-0 P-1438+04 to P-1500+00	Lt.		196													
1-6R 1431+00 to 1434+06																
2-6R 1430+84 to 1433+03	Rt.															
3-6R 1432+56 to 1434+06	Lt.															
4-6R 1435+39 to 1435+64	Rt.															
5-6R 1438+88 to 5-1438+93	Rt.															
RURAL TOTAL		164	192	744	60	196	1	1	2	1	50	925	50	2	6	2



REF.	STATION TO STATION	SIDE	202	603	605	660	830	Special	Bends & Branches	Und
			Ex. Walk Remov. & Type "F"	6"	6"	Sodding	Excising Mowing	Cloving Privy Vaults	6"	Den
			Disp. of S.F.	L.F.	L.F.	S.Y.	S.Y.	Eg.		
T-R	1494+48	Rt.						1		
2-R	1497+5	Rt.						1		
3-R	1497+5	Lt.						1		
4-R	1493+15	Rt.	90							
7-0	1491+90 to 1492+35	Rt.					250			
8-0	1492+02 to 1493+32	Rt.				34	253			
9-0	1495+92 to 1496+42	Rt.		10	68				1	
F-0	1498+00 to 1499+56	Rt.		20	757				2	
5-0	1499+64 to 6-1497+93	Rt.		10	940					
6-0	1499+90 to 1500+00	Lt.			100					
2-0	1499+00 to 1500+00	Rt.	90	40	1205	34	473	3		
	RURAL TOTAL									

1490+00 TO 1500+00

1490+00 TO 1500+00

345 1-70
2402.2-70

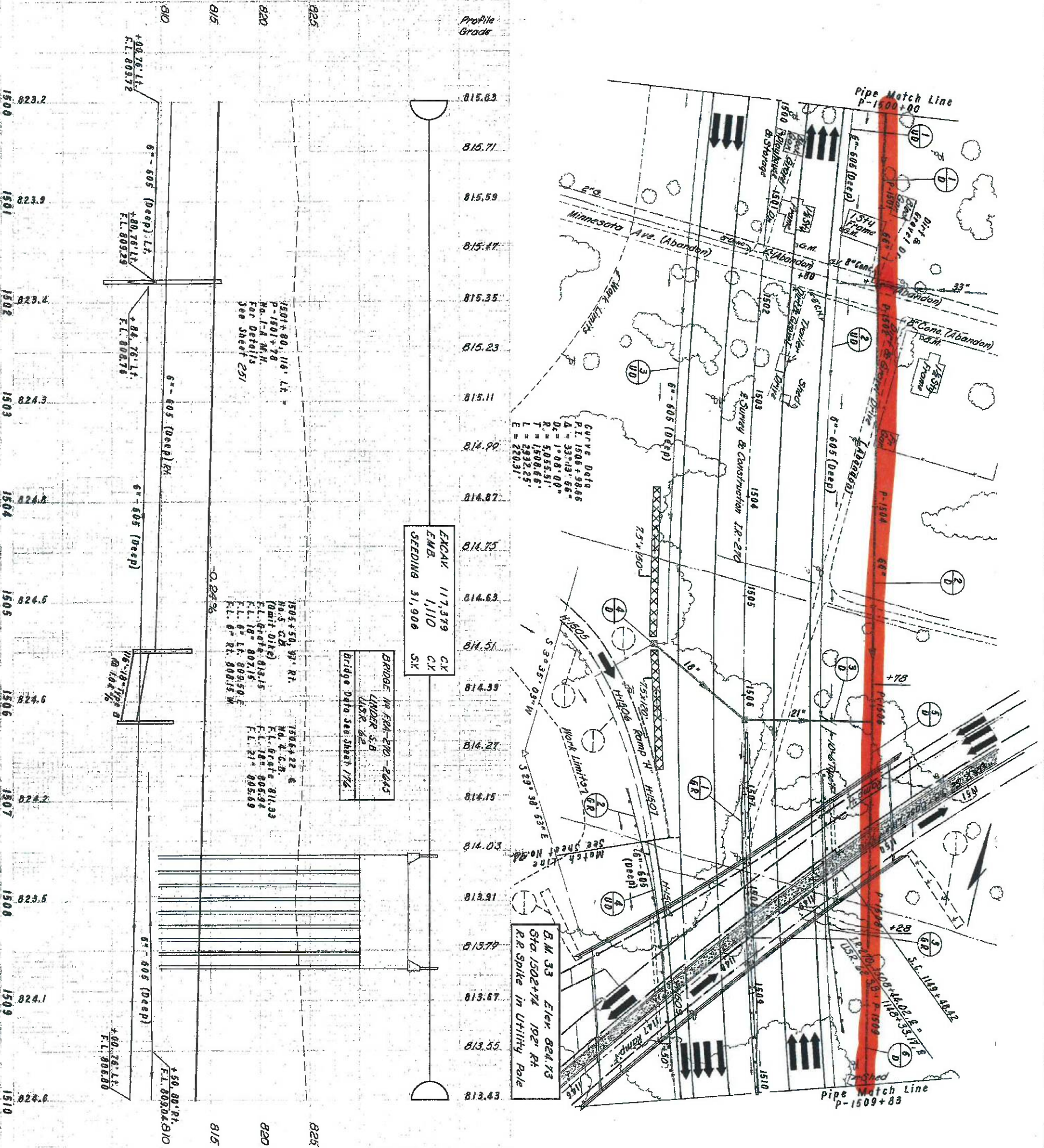
NOTES:

1. For Storm Sewer Profile See Sheet No. 251-232
2. For US.R. 62 S.B. Plan & Profile, See Sheet No. 176-177
3. For Ramp "H" Plan, See Sheet No. 94
4. For Ramp "H" Profile, See Sheet No. 102
5. For Ramp "H" & I.R.-270 Pavement Details, See Sheet No. 192
6. For Interchange Geometrics, See Sheet No. 82, 83 & 84

* 70602 Class III or 70713

REF	STATION TO STATION	SIDE	66'	603	604	667	Bends & Branches
		Type	Type	Type	Type	Type	For Details See Sheet
1-0	P-1500+00 to P-1501+78	L.F.	178				
2-0	P-1501+78 to P-1505+78	L.F.	400				
3-0	P-1505+78 to P-1506+22	L.F.		128			
4-0	P-1506+22 to P-1508+22	R.T.				225	
5-0	P-1508+22 to P-1509+20	L.F.					74
6-0	P-1509+20 to P-1509+83	L.F.	193				
RURAL TOTALS			933	116 128	1	1	225

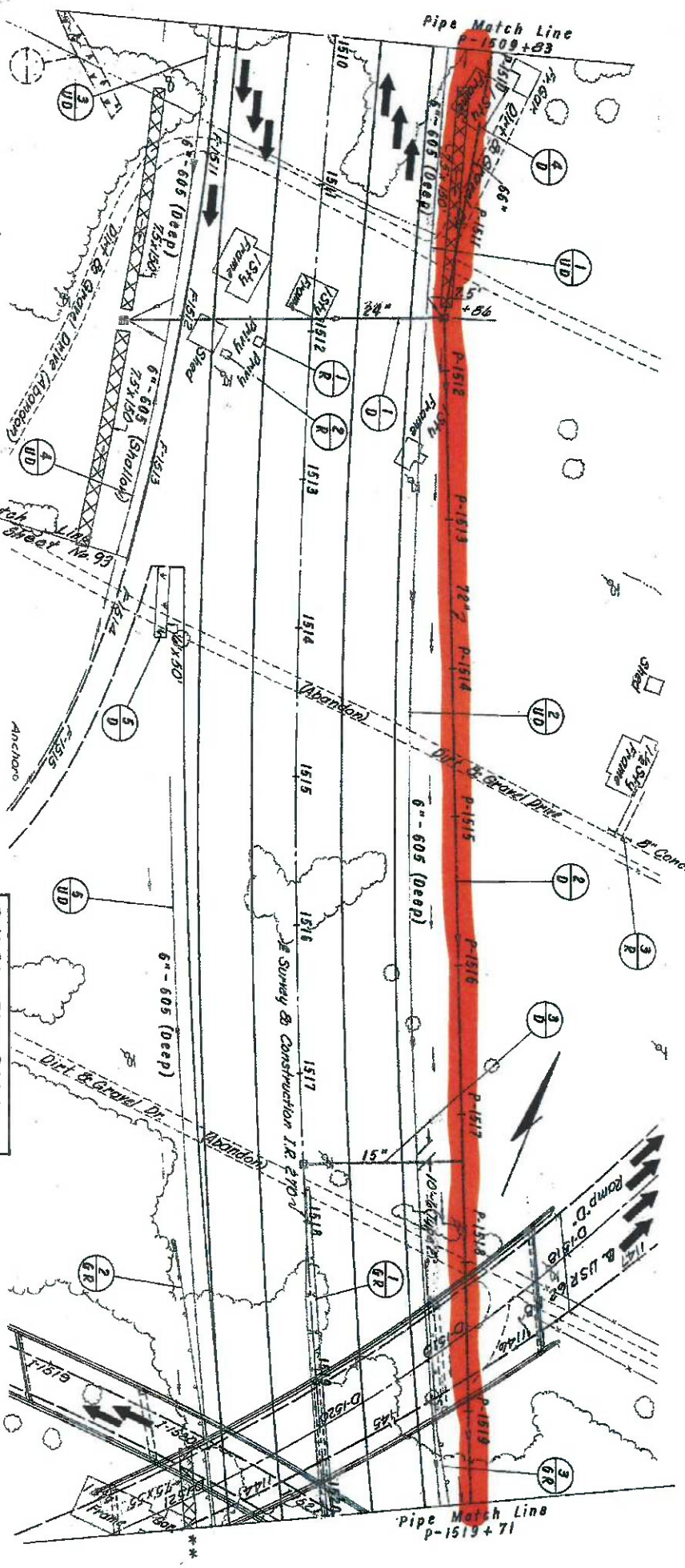
REF	STATION TO STATION	SIDE	603	605	606	Bends & Branches
		Type	Type	Type	Type	Under Drain Detail
1-0	P-1500+00 to P-1501+80	L.F.	10	207		
2-0	P-1501+80 to P-1505+00	L.F.	10	806		
3-0	P-1505+00 to P-1505+50	R.T.	10	555		
4-0	P-1505+50 to P-1510+00	R.T.		260		
5-0	P-1510+00 to P-1510+01.5	L.F.			50 3250	
6-0	P-1510+01.5 to P-1510+74	R.T.			1073 1	
7-0	P-1510+74 to P-1510+83	R.T.			823 1	
RURAL TOTALS			30	1026 50 1754	2 2	2



CD 54.5
CN 40.0
L-70
2-70

NOTES:

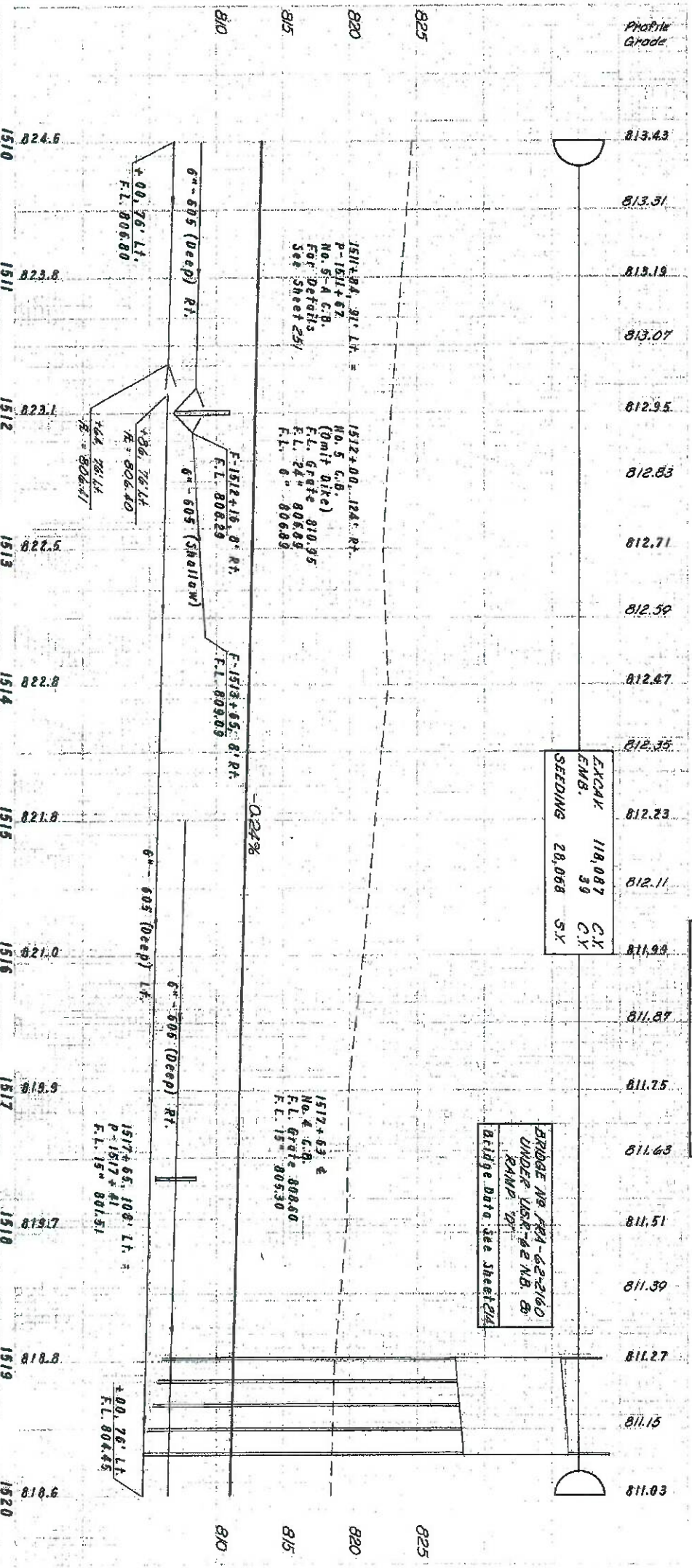
1. For USR-62 N.B. Plan & Profile, See Sheet No. 214
2. For Ramp "F" Plan, See Sheet No. 93
3. For Ramp "F" Profile, See Sheet No. 100
4. For Ramp "F" & I.R. 270 Pavement Details, See Sheet No. 153
5. For Ramp "I" Plan, See Sheet No. 89 & 93
6. For Ramp "I" Profile, See Sheet No. 103
7. ** Jute Matting carried to next sheet
8. For Interchange Geometrics, See Sheet No. 82, 83 & 84



B.M. 34 Elev. 826.12
Sta. 1510+03 374' L.H.
R.R. Spike in Utility Pole

EXCAV. 118,087 C.Y.
EMB. 39 C.Y.
SEEDING 28,068 S.Y.

BRIDGE NO. 104-62-2160
UNDER USR-62 N.B. &
RAMP "I"



REF. STATION TO STATION		SIDE		* 706.02 CL III or 707.13		603		604		606		607		Bends & Branches		For Details See Sheet	
						15° 24' 68" 72"		No. 4		No. 5		No. 6		No. 7		No. 8	
						No. 1		No. 2		No. 3		No. 4		No. 5		No. 6	
						No. 7		No. 8		No. 9		No. 10		No. 11		No. 12	
						No. 13		No. 14		No. 15		No. 16		No. 17		No. 18	
						No. 19		No. 20		No. 21		No. 22		No. 23		No. 24	
						No. 25		No. 26		No. 27		No. 28		No. 29		No. 30	
						No. 31		No. 32		No. 33		No. 34		No. 35		No. 36	
						No. 37		No. 38		No. 39		No. 40		No. 41		No. 42	
						No. 43		No. 44		No. 45		No. 46		No. 47		No. 48	
						No. 49		No. 50		No. 51		No. 52		No. 53		No. 54	
						No. 55		No. 56		No. 57		No. 58		No. 59		No. 60	
						No. 61		No. 62		No. 63		No. 64		No. 65		No. 66	
						No. 67		No. 68		No. 69		No. 70		No. 71		No. 72	
						No. 73		No. 74		No. 75		No. 76		No. 77		No. 78	
						No. 79		No. 80		No. 81		No. 82		No. 83		No. 84	
						No. 85		No. 86		No. 87		No. 88		No. 89		No. 90	
						No. 91		No. 92		No. 93		No. 94		No. 95		No. 96	
						No. 97		No. 98		No. 99		No. 100		No. 101		No. 102	
						No. 103		No. 104		No. 105		No. 106		No. 107		No. 108	
						No. 109		No. 110		No. 111		No. 112		No. 113		No. 114	
						No. 115		No. 116		No. 117		No. 118		No. 119		No. 120	
						No. 121		No. 122		No. 123		No. 124		No. 125		No. 126	
						No. 127		No. 128		No. 129		No. 130		No. 131		No. 132	
						No. 133		No. 134		No. 135		No. 136		No. 137		No. 138	
						No. 139		No. 140		No. 141		No. 142		No. 143		No. 144	
						No. 145		No. 146		No. 147		No. 148		No. 149		No. 150	
						No. 151		No. 152		No. 153		No. 154		No. 155		No. 156	
						No. 157		No. 158		No. 159		No. 160		No. 161		No. 162	
						No. 163		No. 164		No. 165		No. 166		No. 167		No. 168	
						No. 169		No. 170		No. 171		No. 172		No. 173		No. 174	
						No. 175		No. 176		No. 177		No. 178		No. 179		No. 180	
						No. 181		No. 182		No. 183		No. 184		No. 185		No. 186	
						No. 187		No. 188		No. 189		No. 190		No. 191		No. 192	
						No. 193		No. 194		No. 195		No. 196		No. 197		No. 198	
						No. 199		No. 200		No. 201		No. 202		No. 203		No. 204	
						No. 205		No. 206		No. 207		No. 208		No. 209		No. 210	
						No. 211		No. 212		No. 213		No. 214		No. 215		No. 216	
						No. 217		No. 218		No. 219		No. 220		No. 221		No. 222	
						No. 223		No. 224		No. 225		No. 226		No. 227		No. 228	
						No. 229		No. 230		No. 231		No. 232		No. 233		No. 234	
						No. 235		No. 236		No. 237		No. 238		No. 239		No. 240	
						No. 241		No. 242		No. 243		No. 244		No. 245		No. 246	
						No. 247		No. 248		No. 249		No. 250		No. 251		No. 252	
						No. 253		No. 254		No. 255		No. 256		No. 257		No. 258	
						No. 259		No. 260		No. 261		No. 262		No. 263		No. 264	
						No. 265		No. 266		No. 267		No. 268		No. 269		No. 270	
						No. 271		No. 272		No. 273		No. 274		No. 275		No. 276	
						No. 277		No. 278		No. 279		No. 280		No. 281		No. 282	
						No. 283		No. 284		No. 285		No. 286		No. 287		No. 288	
						No. 289		No. 290		No. 291		No. 292		No. 293		No. 294	
						No. 295		No. 296		No. 297		No. 298		No. 299		No. 300	
						No. 301		No. 302		No. 303		No. 304		No. 305		No. 306	
						No. 307		No. 308		No. 309		No. 310		No. 311		No. 312	
						No. 313		No. 314		No. 315		No. 316		No. 317		No. 318	
						No. 319		No. 320		No. 321		No. 322		No. 323		No. 324	
						No. 325		No. 326		No. 327		No. 328		No. 329		No. 330	
						No. 331		No. 332		No. 333		No. 334		No. 335		No. 336	
						No. 337		No. 338		No. 339		No. 340		No. 341		No. 342	
						No. 343		No. 344		No. 345		No. 346		No. 347		No. 348	
						No. 349		No. 350		No. 351		No. 352		No. 353		No. 354	
						No. 355		No. 356		No. 357		No. 358		No. 359		No. 360	
						No. 361		No. 362		No. 363		No. 364		No. 365		No. 366	
						No. 367		No. 368		No. 369		No. 370		No. 371		No. 372	
						No. 373		No. 374		No. 375		No. 376		No. 377		No. 378	
						No. 379		No. 380		No. 381		No. 382		No. 383		No. 384	
						No. 385		No. 386		No. 387		No. 388		No. 389		No. 390	
						No. 391		No. 392		No. 393		No. 394		No. 395		No. 396	
						No. 397		No. 398		No. 399		No. 400		No. 401		No. 402	
						No. 403		No. 404		No. 405		No. 406		No. 407		No. 408	
						No. 409		No. 410		No. 411		No. 412		No. 413		No. 414	
						No. 415		No. 416		No. 417		No. 418		No. 419		No. 420	
						No. 421		No. 422		No. 423		No. 424		No. 425		No. 426	
						No. 427		No. 428		No. 429		No. 430		No. 431		No. 432	
						No. 433		No. 434		No. 435		No. 436		No. 437		No. 438	
						No. 439		No. 440		No. 441		No. 442		No. 443		No. 444	
						No. 445		No. 446		No. 447		No. 448		No. 449		No. 450	
						No. 451		No. 452		No. 453		No. 454		No. 455		No. 456	
						No. 457		No. 458		No. 459		No. 460		No. 461		No. 462	
						No. 463		No. 464		No. 465		No. 466		No. 467		No. 468	
						No. 469		No. 470		No. 471		No. 472		No. 473		No. 474	
						No. 475		No. 476		No. 477		No. 478		No. 479		No. 480	
						No. 481		No. 482		No. 483		No. 484		No. 485		No. 486	
						No. 487		No. 488		No. 489		No. 490		No. 491		No. 492	
						No. 493		No. 494		No. 495		No. 496		No. 497		No. 498	
						No. 499		No. 500		No. 501		No. 502		No. 503		No. 504	
						No. 505		No. 506		No. 507		No. 508		No. 509		No. 510	
						No. 511		No. 512		No. 513		No. 514		No. 515		No. 516	
						No. 517		No. 518		No. 519		No. 520		No. 521		No. 522	
						No. 523		No. 524		No. 525		No. 526		No. 527		No. 528	
						No. 529		No. 530		No. 531		No. 532		No. 533		No. 534	
						No. 535		No. 536		No. 537		No. 538		No. 539		No. 540	
						No. 541		No. 542		No. 543		No. 544		No. 545		No. 546	
						No. 547		No. 548		No. 549		No. 550		No. 551		No. 552	
						No. 553		No. 554		No. 555		No. 556		No. 557		No. 558	
						No. 559		No. 560		No. 561		No. 562		No. 563		No. 564	
						No. 565		No. 566		No. 567		No. 568		No. 569		No. 570	
						No. 571		No. 572		No. 573		No. 574		No. 575		No. 576	
						No. 577		No. 578		No. 579		No. 580		No. 581		No. 582	
						No. 583		No. 584		No. 585		No. 586		No. 587		No. 588	
						No. 589		No. 590		No. 591		No. 592		No. 593		No. 594	
						No. 595		No. 596		No. 597		No. 598		No. 599		No. 600	
						No. 601		No. 602		No. 603		No. 604		No. 605		No. 606	
						No. 607		No. 608		No. 609		No. 610		No. 611		No. 612	
						No. 613		No. 614		No. 615		No. 616		No. 617		No. 618	
						No. 619		No. 620		No. 621		No. 622		No. 623		No. 624	
						No. 625		No. 626		No. 627		No. 628		No. 629		No. 630	
						No. 631		No. 632		No. 633		No. 634		No. 635		No. 636	
						No. 637		No. 638		No. 639		No. 640		No. 641		No. 642	
						No. 643		No. 644		No. 645		No. 646		No. 647		No. 648	
						No. 649		No. 650		No. 651		No. 652		No. 653		No. 654	
						No. 655		No. 656		No. 657		No. 658		No. 659		No. 660	
						No. 661		No. 662		No. 663		No. 664		No. 665		No. 666	
						No. 667		No. 668		No. 669		No. 670		No. 671		No. 672	
						No. 673		No. 674									

FRANKLIN COUNTY
FRA-270-25.30N
FRA-02-20.83

CH
SAS
44.0 ft. 2-70

LEGEND

Existing Concrete Walk removed under Item 203 Excavation

NOTES:

1. For Ramp "I" Plan, See Sheet No. 80 & 83
 2. For Ramp "I" Profile, See Sheet No. 103 & 104
 3. For USR 62 N.B. Plan & Profile, See Sheet No. 214
 4. For Storm Sewer Profile, See Sheet No. 251 & 252
 5. Typical Section on adjacent Project will be similar to FRA-270-25.30N
 6. For Interchange Geometrics, See Sheet No. 82, 83 & 84
- * Jute Matting carried from previous sheet.
* Guard Rail carried on previous sheet.

CURVE DATA
P.T. 1524+51.89
D=5000'-07" 25"
Dc=2000'-00"
R=2664.79'
T=1339.66'
L=2506.19'
E=297.75'

B.M. 36 Elev 818.01.
Sta. 1524+67 241' L.H.
R.R. Spike in Utility Pole

B.M. 35 Elev 822.16
Sta. 1520+85 276' L.H.
R.R. Spike in Utility Pole

BRIDGE No. FRA-270-26.67
UNDER
RAMP "I"
Bridge Data see sheet 80

EXCAV. 28,592 C.Y.
EMB. 33 C.Y.
SEEDING 7,095 S.Y.

1524+00, 99' L.H. =
P-1523+55.
End Pipe
For Details
See Sheet 252

1521+00, 91' L.H. =
P-1520+72
No. 5-A.C.B.
For Details
See Sheet 252

6"-605 (Deep) R.T.
F.L. 805.37

6"-605 (Deep) R.T.
F.L. 805.87

6"-605 (Deep) R.T.
F.L. 805.17

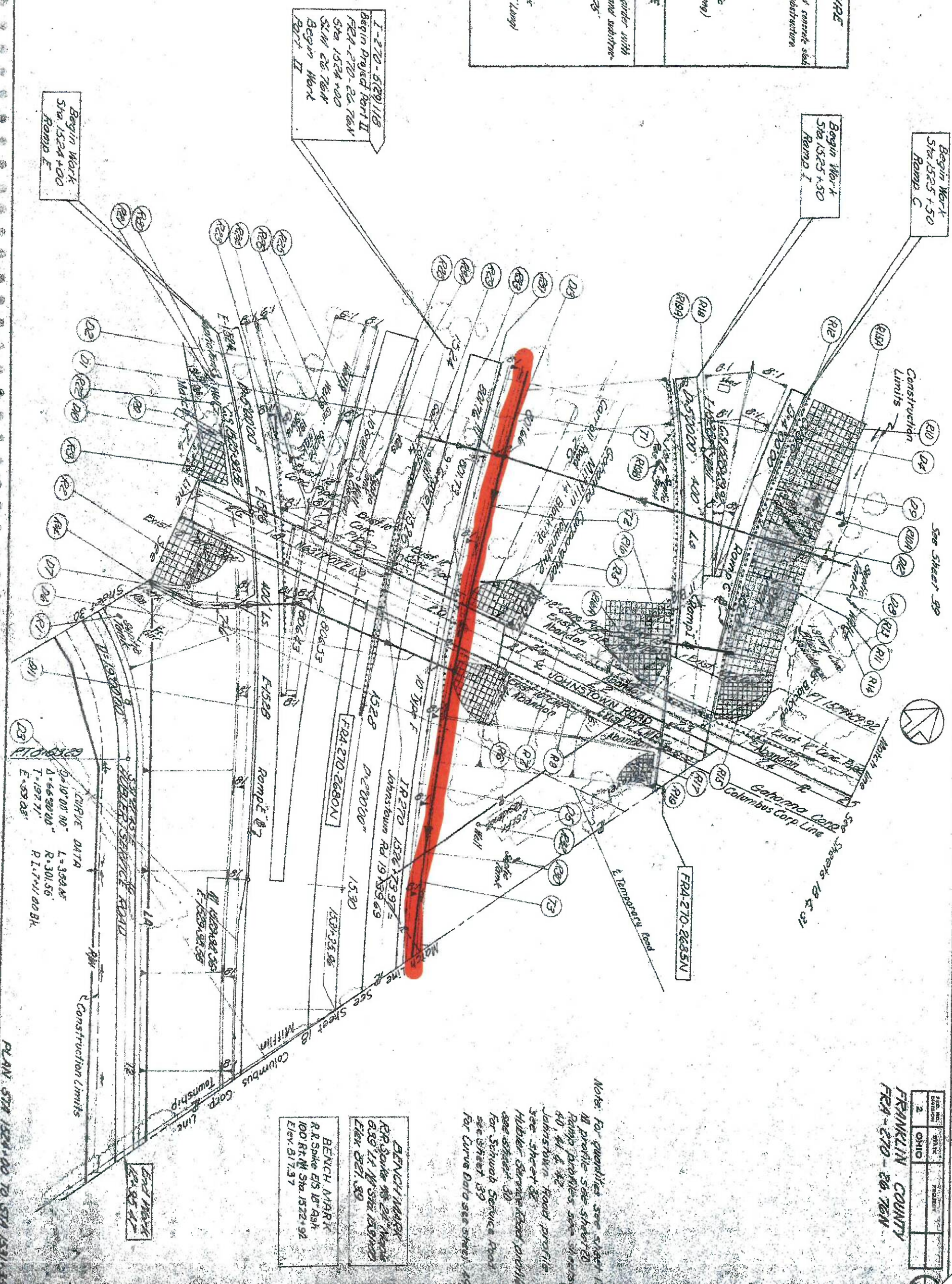
6"-605 (Deep) L.H.
F.L. 803.83

6"-605 (Deep) L.H.
F.L. 803.83

REF	STATION TO STATION	SIDE	603	604	605	606	607
1-D	P-1519+71 to P-1520+72	L.T.	L.F.	L.F.	L.F.	L.F.	L.F.
2-D	P-1520+72 to P-1524+00	L.T.	L.F.	L.F.	L.F.	L.F.	L.F.
3-D	1521+00	L.R.	184	428	1	1	300
RURAL TOTALS			184	428	1	1	300

REF	STATION TO STATION	SIDE	603	605	606	607
1-D	1520+00 to 1520+96	L.T.	L.F.	L.F.	L.F.	L.F.
2-D	1521+00 to 1524+00	L.T.	L.F.	L.F.	L.F.	L.F.
3-D	1521+00 to 1524+00	R.T.	10	107	1	1
4-D	1521+00 to 1524+00	R.T.	10	307	1	1
RURAL TOTALS			30	817		

PROPOSED STRUCTURE	
FRA-270-2685N	
TYPE: 3 span continuous reinforced concrete slab with reinforced concrete substructure	
SPANS: 43.0', 51.75', 43.0'	
LOADING: HS20-44	
SKEW: 18°13'37" L.R.	
WEARING SURFACE: 1" Monolithic	
APPROACH SLAB: 45'-1'-67" (23' long)	
ALIGNMENT: Left spiral	
SUPERELEVATION: None	
PROPOSED STRUCTURE	
FRA-270-2680N	
TYPE: 4 span continuous steel girder with reinforced concrete deck and substructure	
SPANS: 115.00', 115.00', 84.25', 54.75'	
LOADING: HS 20-44	
ROADWAY: 44'-0" to parapets	
SKEW: 13°57'46" R.F.	
WEARING SURFACE: 1" Monolithic	
APPROACH SLAB: 80'-4'-7' (25' long)	
ALIGNMENT: Tangent	
SUPERELEVATION: None	



FRANKLIN COUNTY
FRA-270-26.76N

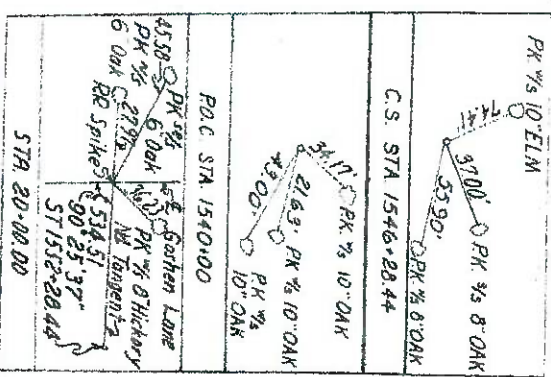
NO.	DATE	BY	PROJECT
2	OHIO		

Note: For quantities see sheet 15.
In profile see sheet 16.
Ramp profiles see sheets 40, 41 & 42.
Johnstown Road profile see sheet 33.
Huber Service Road profile see sheet 39.
For Schuch Service Road see sheet 39.
For Curve Data see sheet 40.

BENCH MARK	
R.R. Spike #8 23' High	
6.89' 14' W. Side (ASPH)	
Elev 621.30	
BENCH MARK	
R.R. Spike EIS 10' Ash	
100 Rt N Sta 1522+92	
Elev 617.57	

PLAN STA 1524+00 TO STA 1524+50

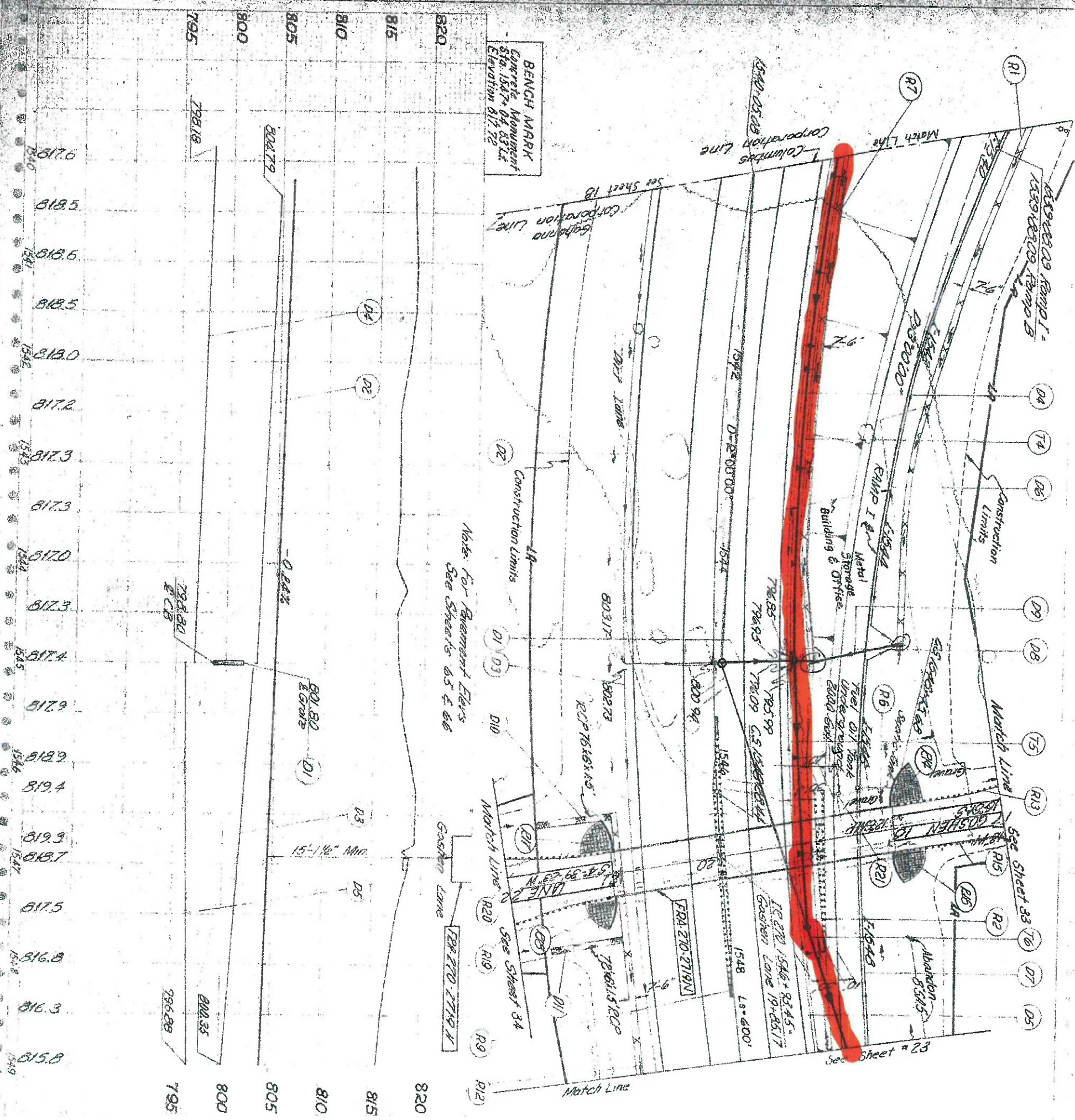
FIG. NO.	STATE	PROJECT	SHEET
2	OHIO		247

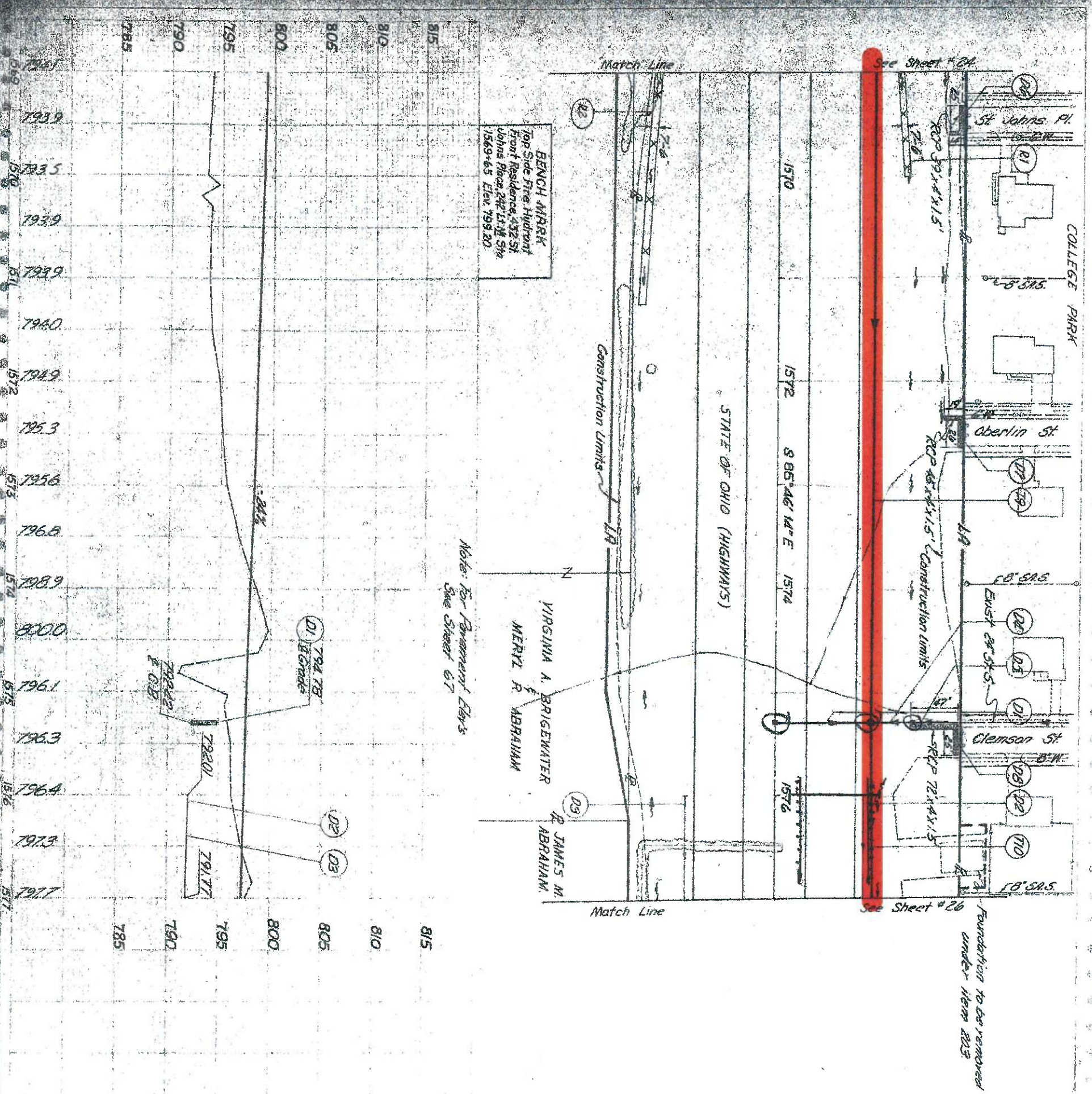


Note: For Curve Data see sheet 49
For quantities see sheet 22
Ramp Profile see sheet 42

PROPOSED STRUCTURE

TYPE: 3 span continuous steel girder with reinforced concrete deck and substructure
SPANS: 75.00', 07.00', 109.00'
LOADING: HS 20-44
ROADWAY: 44'-0" Parapets
SKEW: 4°20'35" L.F.
WEARING SURFACE: 1" Marshallite
APPROACH SLABS: AS-1-G750 10' long
ALIGNMENT: Tangent
SUPERELEVATION: None





FRANKLIN COUNTY
FRA-270-26.76N

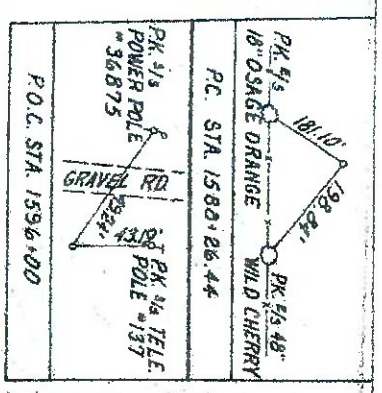
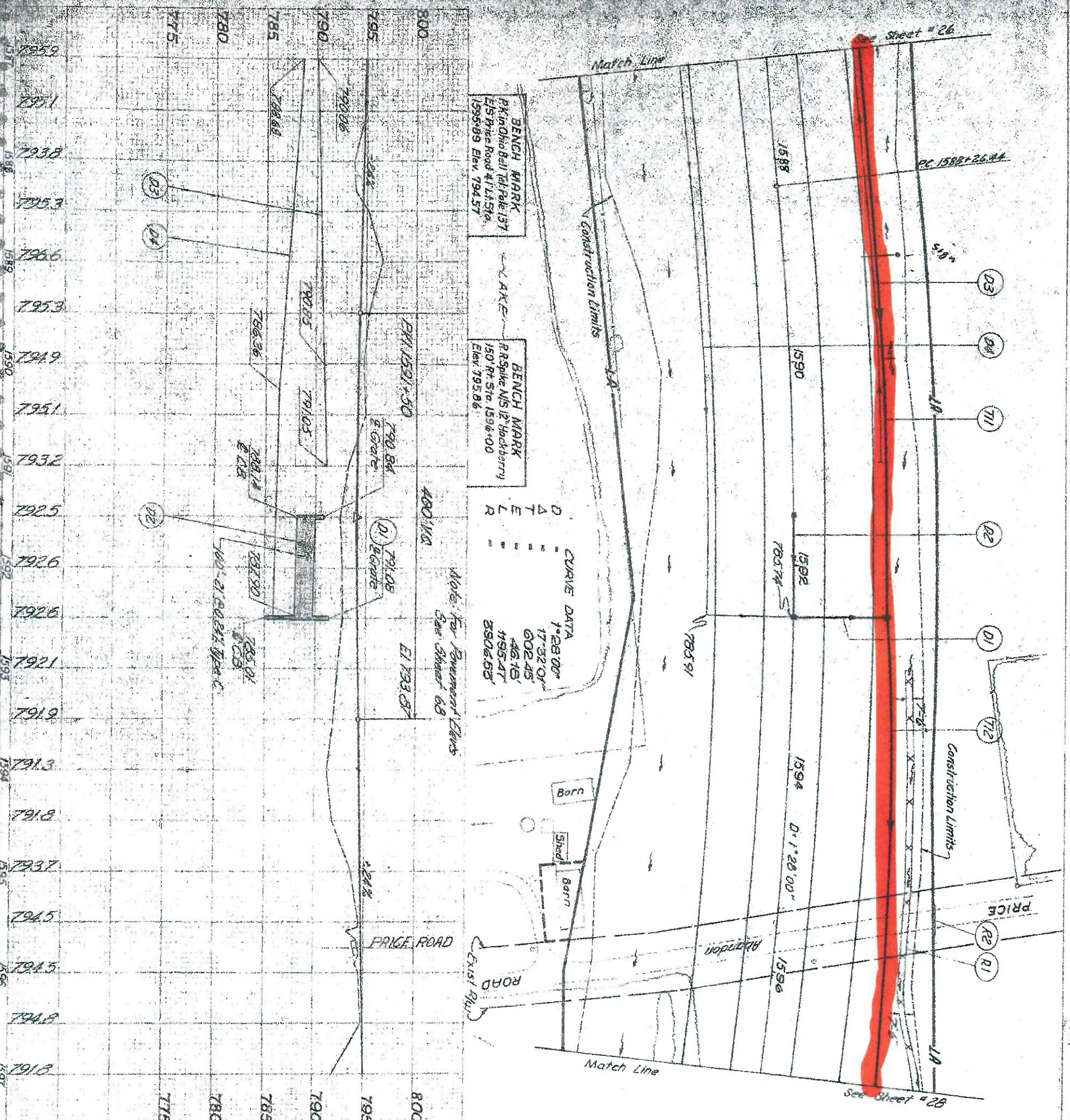
PR 76.6 WILD CHERRY
POT STA 1570+82.70

2 OHIO

24

ROADWAY		667
CODE	LOCATION	SY
R1	1569+00 to 1570+00	82
R2	1570+00 to 1571+00	188
TOTALS		270

DRAINAGE										603	604	605	606
CODE	LOCATION	See Sheet No.	15" Conduit Type B	24" Conduit Type C	24" Conduit Type C	Std. No. 5A Catch Basin	Std. No. 4 Catch Basin	Std. No. 1A Manhole	6" Pipe - Deep Underdrain	Rock Char. Prot. Type B as per plan			
D1	1575+30 to 1576+00	86	93										
D2	1576+00 to 1577+00	25											
D3	1577+00 to 1578+00	25											
D4	1578+00 to 1579+00	86											
D5	1579+00 to 1580+00	86											
D6	1580+00 to 1581+00	86											
D7	1581+00 to 1582+00												
D8	1582+00 to 1583+00												
D9	1583+00 to 1584+00												
D10	1584+00 to 1585+00												
D11	1585+00 to 1586+00												
D12	1586+00 to 1587+00												
D13	1587+00 to 1588+00												
D14	1588+00 to 1589+00												
D15	1589+00 to 1590+00												
D16	1590+00 to 1591+00												
D17	1591+00 to 1592+00												
D18	1592+00 to 1593+00												
D19	1593+00 to 1594+00												
D20	1594+00 to 1595+00												
D21	1595+00 to 1596+00												
D22	1596+00 to 1597+00												
D23	1597+00 to 1598+00												
D24	1598+00 to 1599+00												
D25	1599+00 to 1600+00												
D26	1600+00 to 1601+00												
D27	1601+00 to 1602+00												
D28	1602+00 to 1603+00												
D29	1603+00 to 1604+00												
D30	1604+00 to 1605+00												
D31	1605+00 to 1606+00												
D32	1606+00 to 1607+00												
D33	1607+00 to 1608+00												
D34	1608+00 to 1609+00												
D35	1609+00 to 1610+00												
D36	1610+00 to 1611+00												
D37	1611+00 to 1612+00												
D38	1612+00 to 1613+00												
D39	1613+00 to 1614+00												
D40	1614+00 to 1615+00												
D41	1615+00 to 1616+00												
D42	1616+00 to 1617+00												
D43	1617+00 to 1618+00												
D44	1618+00 to 1619+00												
D45	1619+00 to 1620+00												
D46	1620+00 to 1621+00												
D47	1621+00 to 1622+00												
D48	1622+00 to 1623+00												
D49	1623+00 to 1624+00												
D50	1624+00 to 1625+00												
D51	1625+00 to 1626+00												
D52	1626+00 to 1627+00												
D53	1627+00 to 1628+00												
D54	1628+00 to 1629+00												
D55	1629+00 to 1630+00												
D56	1630+00 to 1631+00												
D57	1631+00 to 1632+00												
D58	1632+00 to 1633+00												
D59	1633+00 to 1634+00												
D60	1634+00 to 1635+00												
D61	1635+00 to 1636+00												
D62	1636+00 to 1637+00												
D63	1637+00 to 1638+00												
D64	1638+00 to 1639+00												
D65	1639+00 to 1640+00												
D66	1640+00 to 1641+00												
D67	1641+00 to 1642+00												
D68	1642+00 to 1643+00												
D69	1643+00 to 1644+00												
D70	1644+00 to 1645+00												
D71	1645+00 to 1646+00												
D72	1646+00 to 1647+00												
D73	1647+00 to 1648+00												
D74	1648+00 to 1649+00												
D75	1649+00 to 1650+00												
D76	1650+00 to 1651+00												
D77	1651+00 to 1652+00												
D78	1652+00 to 1653+00												
D79	1653+00 to 1654+00												
D80	1654+00 to 1655+00												
D81	1655+00 to 1656+00												
D82	1656+00 to 1657+00												
D83	1657+00 to 1658+00												
D84	1658+00 to 1659+00												
D85	1659+00 to 1660+00												
D86	1660+00 to 1661+00												
D87	1661+00 to 1662+00												
D88	1662+00 to 1663+00												
D89	1663+00 to 1664+00												
D90	1664+00 to 1665+00												
D91	1665+00 to 1666+00												
D92	1666+00 to 1667+00												
D93	1667+00 to 1668+00												
D94	1668+00 to 1669+00												
D95	1669+00 to 1670+00												
D96	1670+00 to 1671+00												
D97	1671+00 to 1672+00												
D98	1672+00 to 1673+00												
D99	1673+00 to 1674+00												
D100	1674+00 to 1675+00												
D101	1675+00 to 1676+00												
D102	1676+00 to 1677+00												
D103	1677+00 to 1678+00												
D104	1678+00 to 1679+00												
D105	1679+00 to 1680+00												
D106	1680+00 to 1681+00												
D107	1681+00 to 1682+00												
D108	1682+00 to 1683+00												
D109	1683+00 to 1684+00												
D110	1684+00 to 1685+00												
D111	1685+00 to 1686+00												
D112	1686+00 to 1687+00												
D113	1687+00 to 1688+00												
D114	1688+00 to 1689+00												
D115	1689+00 to 1690+00												
D116	1690+00 to 1691+00												
D117	1691+00 to 1692+00												
D118	1692+00 to 1693+00												
D119	1693+00 to 1694+00												
D120	1694+00 to 1695+00												
D121	1695+00 to 1696+00												
D122	1696+00 to 1697+00												
D123	1697+00 to 1698+00												
D124	1698+00 to 1699+00												
D125	1699+00 to 1700+00												
D126	1700+00 to 1701+00												
D127	1701+00 to 1702+00												
D128	1702+00 to 1703+00												
D129	1703+00 to 1704+00												
D130	1704+00 to 1705+00												
D131	1705+00 to 1706+00												
D132	1706+00 to 1707+00												
D133	1707+00 to 1708+00												
D134	1708+00 to 1709+00												
D135	1709+00 to 1710+00												
D136	1710+00 to 1711+00												
D137	1711+00 to 1712+00												
D138	1712+00 to 1713+00												
D139	1713+00 to 1714+00												
D140	1714+00 to 1715+00												
D141	1715+00 to 1716+00												
D142	1716+00 to 1717+00												
D143	1717+00 to 1718+00												
D144	1718+00 to 1719+00												
D145	1719+00 to 1720+00												
D146	1720+00 to 1721+00												
D147	1721+00 to 1722+00												
D148	1722+00 to 1723+00												
D149	1723+00 to 1724+00												
D150	1724+00 to 1725+00												
D151	1725+00 to 1726+00												
D152	1726+00 to 1727+00												
D153	1727+00 to 1728+00												
D154	1728+00 to 1729+00												
D155	1729+00 to 1730+00												
D156	1730+00 to 1731+00												
D157	1731+00 to 1732+00												
D158	1732+00 to 1733+00												
D159	1733+00 to 1734+00												
D160	1734+00 to 1735+00												
D161	1735+00 to 1736+00												
D162	1736+00 to 1737+00												
D163	1737+00 to 1738+00												
D164	1738+00 to 1739+00												
D165	1739+00 to 1740+00												
D166	1740+00 to 1741+00												
D167	1741+00 to 1742+00												
D168	1742+00 to 1743+00												
D169	1743+00 to 1744+00												
D170	1744+00 to 1745+00												
D171	1745+00 to 1746+00												
D172	1746+00 to 1747+00												
D173	1747+00 to 1748+00												
D174	1748+00 to 1749+00												
D175	1749+00 to 1750+00												
D176	1750+00 to 1751+00												
D177	1751+00 to 1752+00												
D178	1752+00 to 1753+00												



FRANKLIN COUNTY		FRA-270-26.76N	
EARTHWORK & SEEDING		TOTALS	
LOCATION	Excavation	Embankment	Seeding & Mulching
1587+00 to 1597+00	1581.6919	1581.6919	1581.6919
TOTALS	1581.6919	1581.6919	1581.6919

ROADWAY		TOTALS	
CODE	LOCATION	Excavation	Embankment
R1	1593+00 to 1597+00	347.2512	347.2512
R2	1590+37.01 to 1597+00	347.2512	347.2512
TOTALS		347.2512	347.2512

DRAINAGE		TOTALS	
CODE	LOCATION	Excavation	Embankment
D1	1592+50 to 93.11	89.93	89.93
D2	1591+50 to 1592+50	27	27
D3	1587+00 to 1591+00	27	27
D4	1587+00 to 1592+50	89	89
TOTALS		153	153

NY Trunk Sewer		Table of Offsets	
Station	Distance	Left of &	Right of &
1592+50	93	97	105
1593+00	97	105	110
1594+00	105	110	115
1595+00	110	115	120
1597+00	115	120	125

